

LOCAL PLAN CONSULTATION

Land at Old End, Appleby Magna and 40 Measham Road (Ap15/Ap17)



Site boundary — Public footpath — Flood zone — Conservation area —

- Approx. 32 homes
- Public open space
- Access from Measham Road
- Retention of existing hedgerows and trees
- Landscaping on the eastern boundary
- A design and layout that minimises impact on the Conservation Area
- No housing in Flood Zones.

LOCAL PLAN CONSULTATION

Land off Ramscliff Avenue, Donisthorpe (D8)



Site boundary — Public footpath —

© Google Earth

- Approx. 32 homes
- Public open space
- Access from Ramscliff Avenue
- No vehicular access from Church Street
- Connections to existing public footpaths
- Retention of existing hedgerows and trees
- New trees and landscaping in keeping with the National Forest
- Subject to further reports into land stability and contamination

LOCAL PLAN CONSULTATION

Land adjacent to Sparkenhoe Estate, Heather (H3)



Site boundary — Public footpath —

© Google Earth

- Approx. 32 homes
- Public open space
- Access from Gadsby Road
- Public right of way enhanced and may cross the new access road
- Retention of existing hedgerows
- New trees and landscaping in keeping with the National Forest
- Landscaping buffers on northern and western boundaries.

LOCAL PLAN CONSULTATION

Land off Ashby Road, Moira (Mo8)



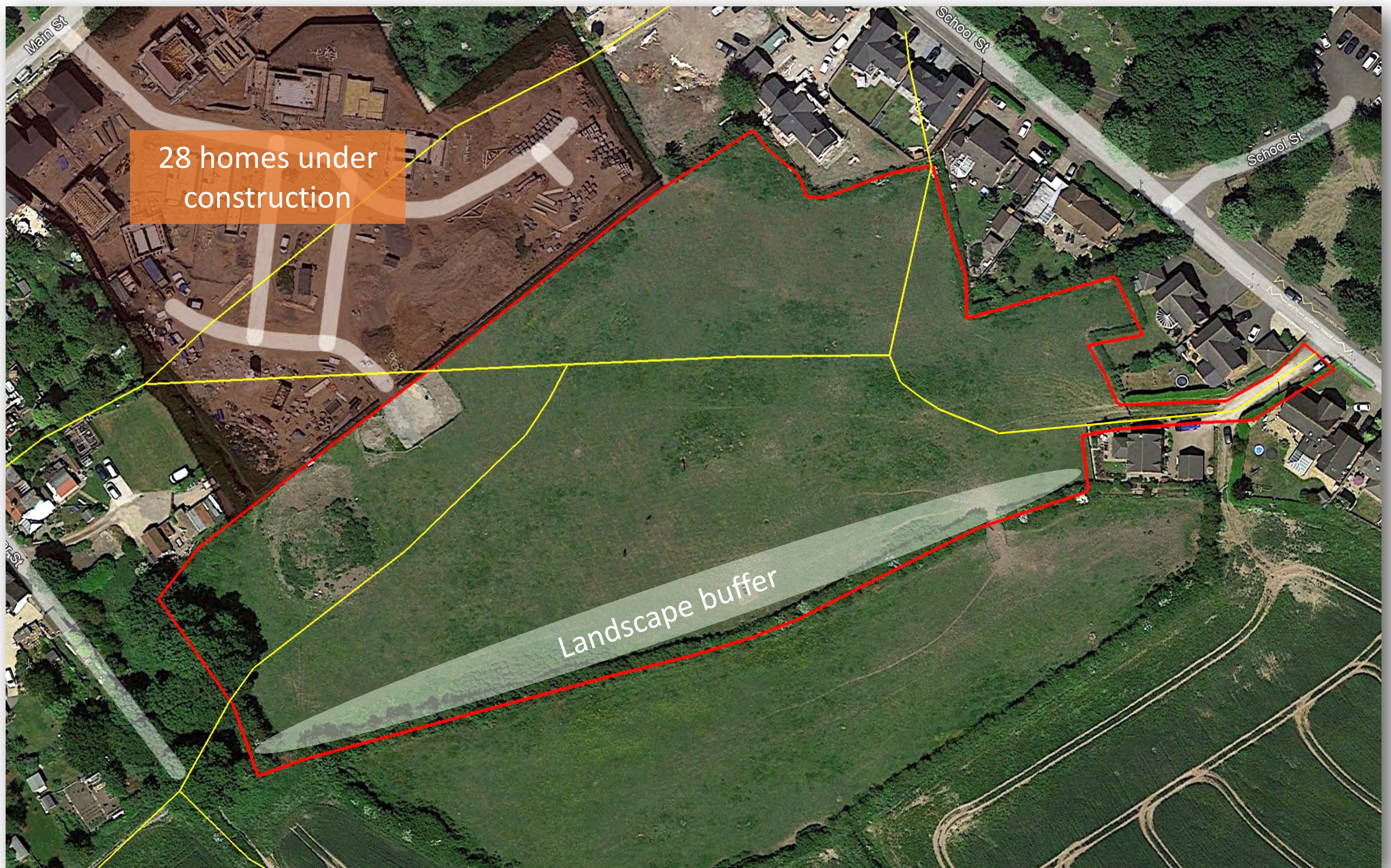
© Google Earth

Site boundary ———

- Approx. 49 homes
- Areas of public open space
- Access from Ashby Road
- Retention of existing trees and hedgerows
- Additional trees and landscaping in keeping with the National Forest
- A design and layout which includes frontage development onto Ashby Road
- Evidence that land stability and contamination issues will not prevent the development of the site.

LOCAL PLAN CONSULTATION

Land at School Lane, Oakthorpe (Oa5)



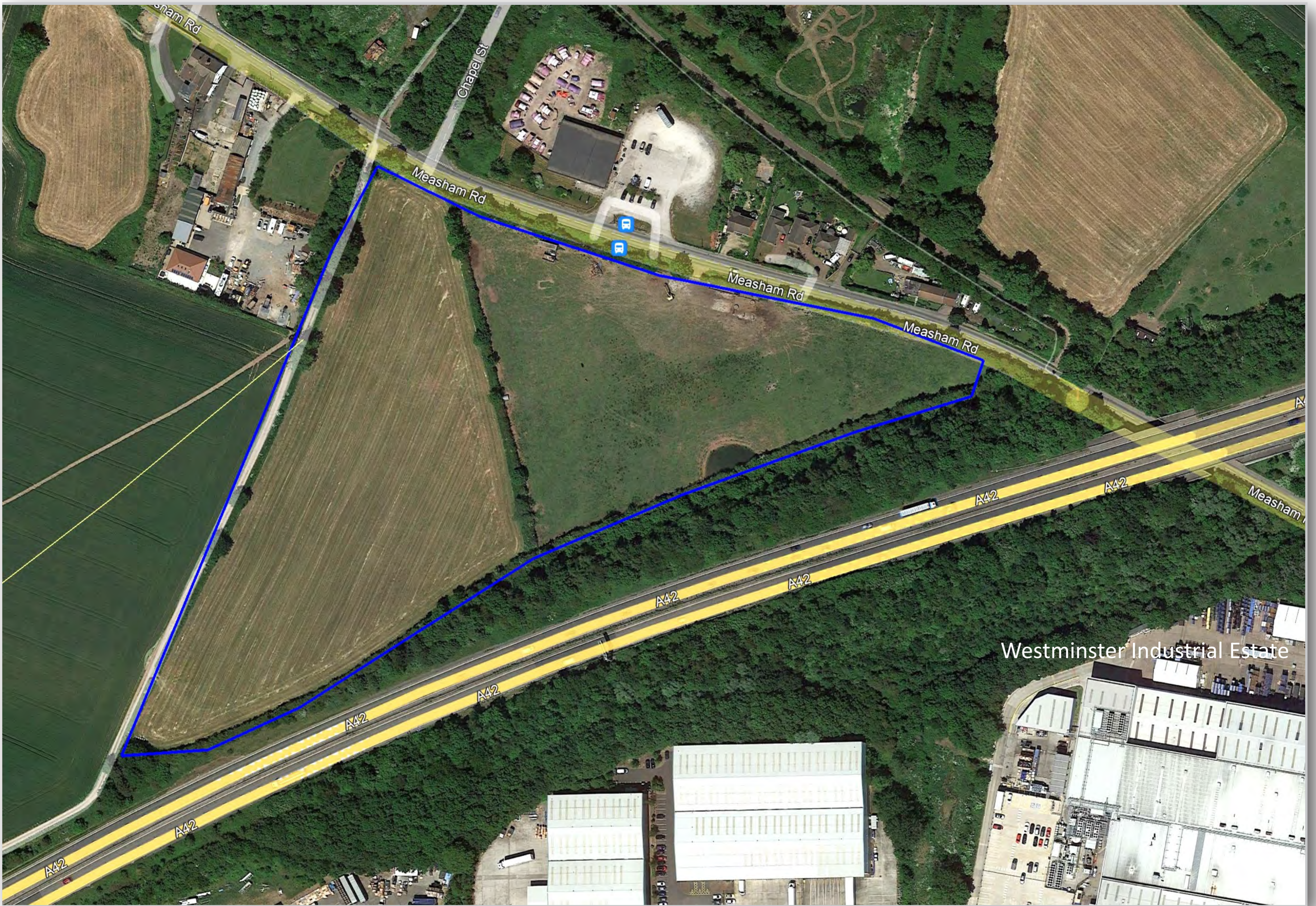
Site boundary — Public footpath — Under construction —

© Google Earth

- Approx. 47 homes
- Public open space
- Access from neighbouring James Maddison Homes development
- A design and layout which incorporates the routes of existing footpaths
- Retention of existing hedgerows and trees
- New trees and landscaping in keeping with the National Forest
- Landscape buffer on the southern boundary.

LOCAL PLAN CONSULTATION

Land at Burton Road (Measham Road) Oakthorpe (EMP60)



Site boundary —

© Google Earth

- Approx. 12,000sqm of industry/smaller warehousing
- Includes space for businesses start-ups
- Access onto Measham Road
- Local highway improvements including a pedestrian crossing on Measham Road
- Additional trees and landscaping in keeping with the National Forest
- Design to respect nearby properties.

LOCAL PLAN CONSULTATION

Land at Heather Lane, Ravenstone (R12)



© Google Earth

Site boundary — Public footpath —

- Approx. 50 homes
- Public open space
- Access via Beesley Lane
- Homes on the north-eastern part of the site, in keeping with neighbouring development
- Retention of existing trees and hedgerows
- New trees and landscaping in keeping with the National Forest
- Further work on potential impact of odour from nearby treatment works needed.