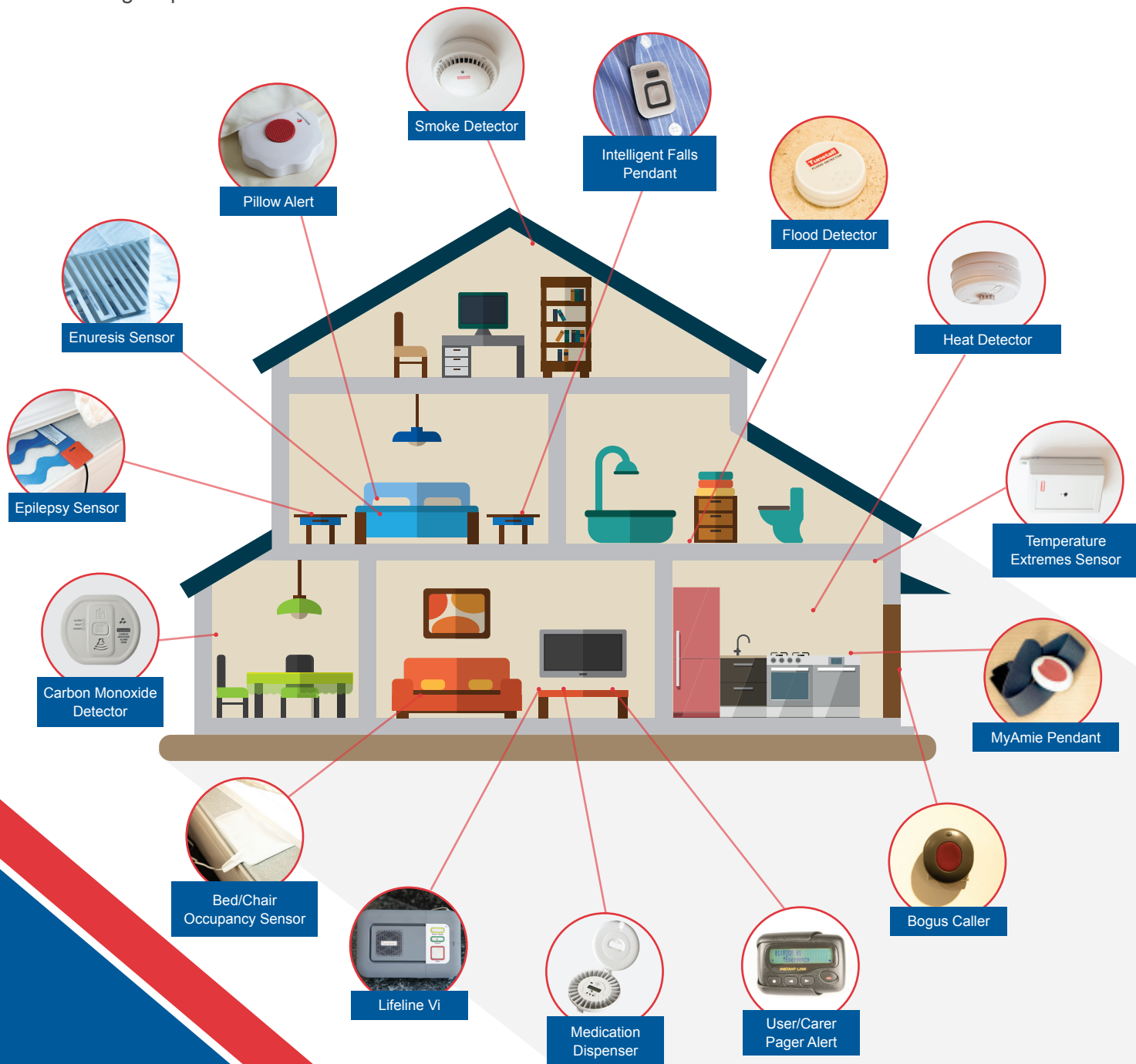


INDEPENDENT LIVING

THROUGH TELECARE SOLUTIONS

A range of discreet telecare sensors offer a comprehensive way of managing the risks to a person's health and home environment 24 hours a day, 365 days a year, enabling people to live independently for as long as possible.

Designed to work with both individual Lifeline units and in sheltered settings, the range of sensors can be flexibly applied according to the needs of the service user.





1 Lifeline unit - receives alerts from sensors placed around the home and notifies a monitoring centre if it detects a problem



2 Personal Pendant - pressing the pendant allows an alarm call to be raised within a radius of up to 50 metres from the Lifeline unit



3 Intelligent Falls Pendant - a small, lightweight device which will automatically detect if the wearer has fallen and raise the alarm. It also provides the wearer with a means of calling for help from anywhere in their home or garden 24 hours a day



4 Smoke Detector - the smoke detector raises an instant alarm call if it detects smoke, ensuring any potential fire situations are always responded to



5 Flood Detector - provides an early warning by raising an alert of potential flood situations in the home



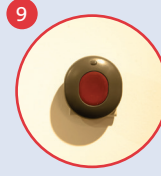
6 Heat detector - provides additional protection against the risks of fires in rooms where smoke detectors are unsuitable e.g. kitchen



7 Temperature Extremes Sensor - detects low, high or rapid rate of rise of temperature within a property and raises appropriate alert



8 Carbon Monoxide Detector - warns of dangerous CO levels within a property allowing the appropriate action to be taken



9 Bogus Caller Button - fitted near a door, this discreet button can be used to call for assistance when a stranger requests entry into a home



10 Bed/Chair Occupancy Sensor - provides an early warning by alerting that the user has left their bed/chair and not returned within a predetermined time period



11 Enuresis Sensor - placed between a mattress and a sheet, this sensor provides immediate warning on detection of moisture to allow effective action to be taken



12 Epilepsy Sensor - provides warning of epileptic attack whilst in bed



13 Pillow Alert - vibrates to alert a sleeping user to a potentially dangerous situation e.g. smoke alarm



14 Medication Dispenser - provides effective solutions to support medication compliance. Can be used to provide other reminders if required



15 User/Carer Pager Alert - provides hearing impaired users with immediate notification of alarm call activation. A pager can also be used to alert a live in carer of sensors being triggered in the home

For further information regarding the Safe & Well service please contact us:

✉ safeandwell@nwleicestershire.gov.uk

☎ **01530 454817**

🌐 nwleics.gov.uk/safeandwell