

APPENDIX C

MODEL INPUT DATA AND VERIFICATION RESULTS

BREEZE ROADS AIR DISPERSION MODEL INPUT DATA

East Midlands Airport 2007 Meteorological Data

Table C1: Copt Oak Monitoring Data

Diffusion Tube (NO₂, µgm⁻³)		
Name	Copt Oak Road 1 / 2	Copt Oak (21)
OS Grid Reference	448141	448122
	312957	313068
2007 Concentration (µgm⁻³)	48.73	49.49

Table C2: NETCEN Background; OS Grid Reference 446500:312500

Year	Concentration (µgm⁻³)		
	NO_x	NO₂	PM₁₀
2005	28.4	19.1	29.5
Factor to 2007	0.92	0.95	0.96
2007	26.1	18.1	28.3

Table C3: Breeze Roads Model Verification Data

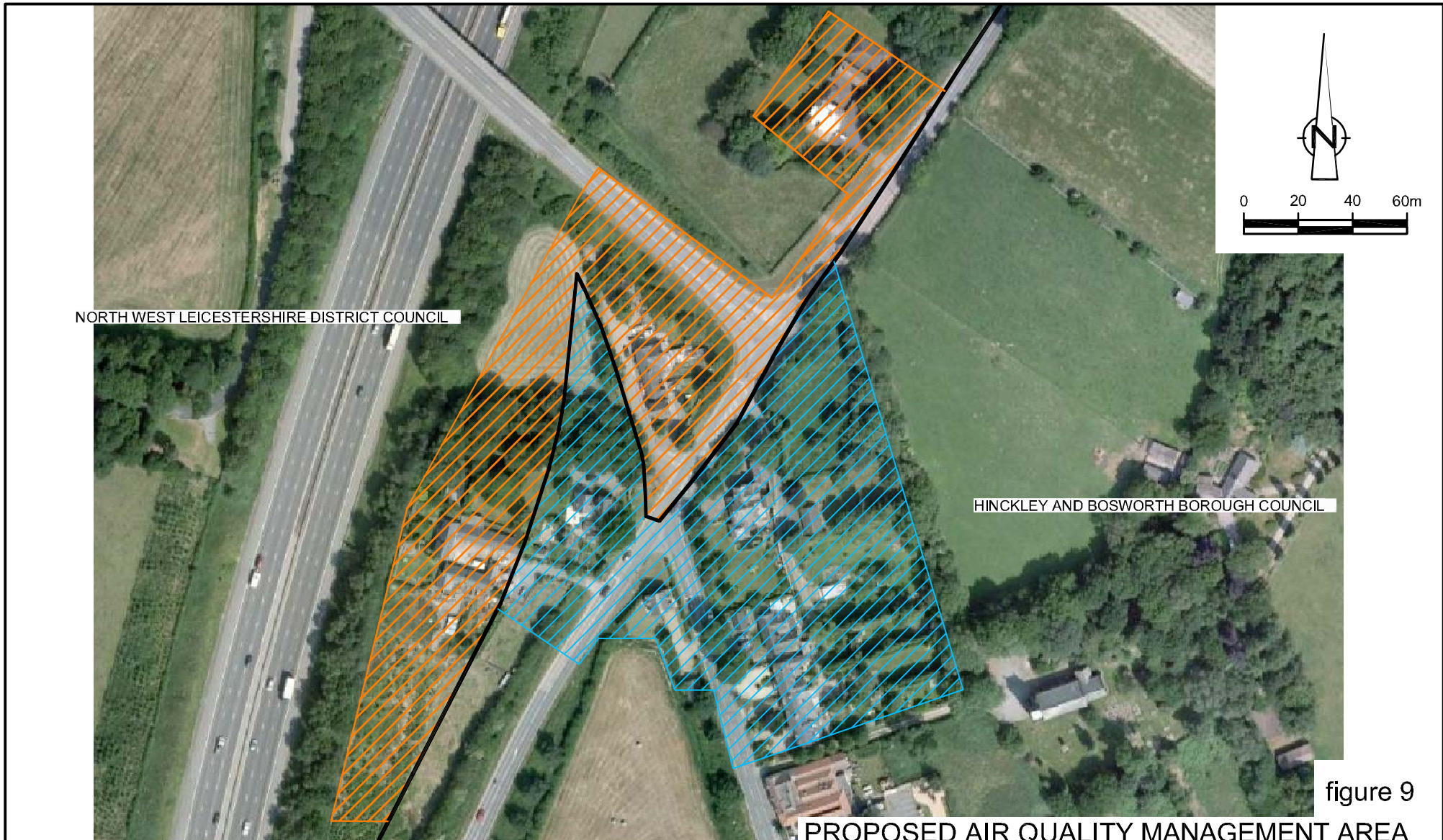
	Copt Oak Road 1 / 2	Copt Oak (21)
Breeze Roads NO_x	25.86	38.92
Calibration Factor	6	6
NO_x ROAD	155.16	233.52
NO_x Total	181.3	259.6
NO₂ Road	27.4	35.5
NO₂ Total	45.5	53.6
Verification Factor	0.93	1.08
Average Verification Factor	1.01	

Table C4: Model Traffic Count Data

Road Link	Description	12 Hour	AADT ₁	%HGV	LDV (%)	kph	HGV (%)	kph	veh/hr	g/veh/km	
										NOx	PM10
1	M1 South		53,718	16.3	83.7	110	16.3	110	2,238	1.73	0.053
2	M1 North		52,028	16.3	83.7	110	16.3	110	2,168	1.73	0.053
3	Copt Rd S	5,299	6,104	5.4	94.6	50	5.4	50	254	0.64	0.021
4	Whitwick Rd	5,698	6,564	2.4	97.6	50	2.4	50	274	0.46	0.017
5	Copt Rd M	10,707	12,334	3.7	96.3	50	3.7	50	514	0.54	0.019
6	Warren Hill Rd	8,070	9,297	2.9	97.1	50	2.9	50	387	0.49	0.017
7	Copt Rd N	9,656	11,124	3.4	96.6	50	3.4	50	463	0.52	0.018

Note 1 Conversion from 12 hour traffic counts to AADT: 1.152 (Cambridge City Council, 2007)

APPENDIX D
PROPOSED AIR QUALITY MANAGEMENT AREA





NORTH WEST LEICESTERSHIRE DISTRICT COUNCIL

HINCKLEY AND BOSWORTH BOROUGH COUNCIL

figure 9

PROPOSED AIR QUALITY MANAGEMENT AREA
 COPT OAK AIR QUALITY DETAILED ASSESSMENT
 NORTH WEST LEICESTERSHIRE DISTRICT COUNCIL
Council Offices, Coalville

LEGEND

- DISTRICT BORDER
-  PROPOSED NWLDC AQMA
-  RECOMMENDED HINCKLEY AND BOSWORTH AQMA

