

# Important Changes To Housing Benefit Affecting Those Under 35.

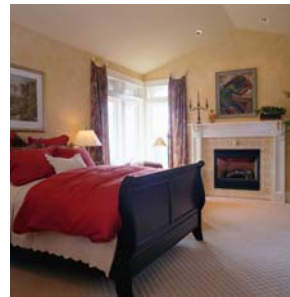


(Harborough District Council, Hinckley & Bosworth Borough Council and North West Leicestershire District Council)  
"Working in Partnership to deliver better services"

**If you are living on your own, with no partner, children or non-dependants there is a change to the Shared Room Rate and Single Room Rate coming into force on 1 January 2012, which may reduce the amount of Housing Benefit you will receive.**

From 1 January 2012 the government has increased the age that a single individual will have to live in shared accommodation from under 25 to under 35.

This means if you are single under the age of 35 with no partner, children or non-dependants, you will not be entitled to a one bedroom property for Housing Benefit purposes. The maximum rate Housing Benefit will be able to pay is the shared room/single room rate, which is applicable to those renting a room in shared accommodation with sole use of one room and sharing a living room, kitchen and bathroom. However there are some exceptions:



- If you receive Severe Disability Premium you will receive the one bedroom rate.
- If you are a care leaver under 22 you will receive the one bedroom rate. However from age 22 – 34 it will reduce to the shared room rate.
- If you are 25-34 and have been in homeless hostel accommodation for 3 months or more and received a support package to rehabilitate you into the community – you will receive the one bedroom rate but only if you are living in a one bedroom self contained property.
- If you are an ex-offender aged 25-34 and are subject to a MAPPA multi-agency management provision - – you will receive the one bedroom rate but only if you are living in a one bedroom self contained property.

If you are an existing Housing Benefit claimant you will not be affected until:

- The end of any transitionally protected housing benefit or
- Your LHA/Rent Officer Anniversary Date.