



Safer North West  
Partnership

# North West Leicestershire Community Safety Strategy 2011-2014

“We will work together with those who live,  
work and visit North West Leicestershire to  
maintain and improve pride in our communities”





## **Foreword**

As chairman of the Safer North West Partnership I am pleased to introduce the Community Safety Strategy for 2011-14. Over the past three years the Partnership has worked to deliver against the previous strategy with great success. Relationships between partners have gone from strength to strength and this has enabled us to work effectively together to drive down crime and disorder in the district.

Over the past year in particular we have seen good reductions with anti-social behaviour down by 25%, serious acquisitive crime down by 23% and violent crime down 8%. However, we acknowledge that despite these successes there is still more work that can be done.

During the last three year strategy the Community Safety Partnership in the district was known as the 'Partnership in Safer Communities' (PiSC) however we have now been renamed 'Safer North West Partnership' (SNWP). It is hoped that by refreshing the name and priorities we have clarified what we are hoping to achieve as a partnership. Alongside the new name is our new logo which we hope will signal a new beginning for the Community Safety Partnership.

I am sure that the next three years will bring challenges, however as a strong and well established partnership I am confident we will be able to overcome them. We will work closely with the communities we serve to improve public access to the work of the partnership and improve accountability.

I am confident that by working together and building on previous successes we can make an even greater contribution to improving the quality of life for those that live in, work in and visit North West Leicestershire.

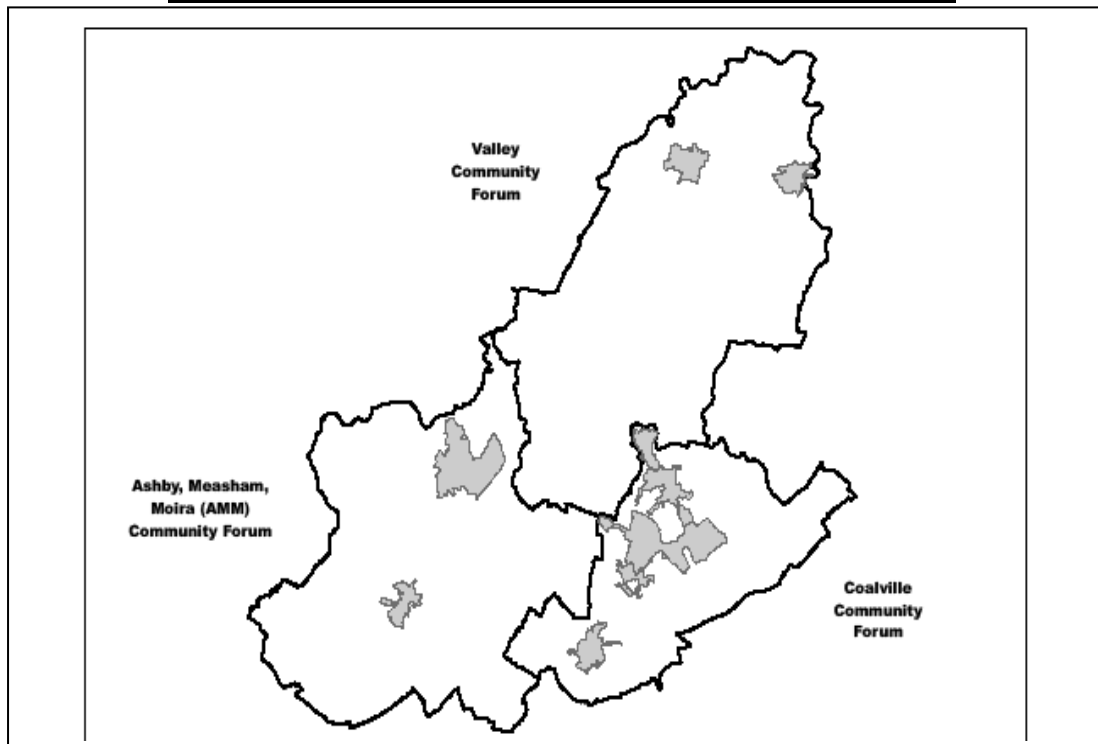
**Councillor Trevor Pendleton**  
**Portfolio Holder for Communities**  
**Chairman of Safer North West Partnership**

## **Introduction**

North West Leicestershire is located in the heart of the Midlands and has a number of unique characteristics which bring their own community safety considerations. The district is home to East Midlands Airport and Donington Park race circuit in the north and is also part of the National Forest. There are stretches of the M1 motorway and other major commuter routes passing through the district.

The district is divided into three community forum areas which are shown below.

### **North West Leicestershire Community Forum Areas**



Over the past decade since community safety partnerships were introduced this joined up way of working has contributed to a sustained fall in crime. The 1998 Crime and Disorder Act required Crime and Disorder Reduction Partnerships (CDRPs) be set up and placed an obligation on local authorities and police to work together to implement a strategy to tackle crime and disorder in their area. Since this time further legislation has expanded the remit of the partnership and made more organisations, such as primary care trusts, also accountable for community safety.

Every three years each community safety partnership is required by law to produce a strategy, informed by strategic assessment and consultation, which outlines the activities it plans to undertake. The strategy identifies priorities and trends for the partnership to focus on and provides a framework for delivery. The strategy is refreshed annually to respond to emerging threats.

The Safer North West Partnership brings together a number of organisations with a shared commitment to reducing crime and disorder in the district. The partnership is made up of a number of organisations including;

- North West Leicestershire District Council
- Leicestershire County Council
- Leicestershire Constabulary
- Leicestershire Fire & Rescue
- Leicestershire & Rutland Probation Service
- NHS Leicestershire County & Rutland (the operating name for Leicestershire County & Rutland Primary Care Trust)
- Leicestershire Police Authority
- Leicestershire Fire Authority

The statutory agencies on the partnership work closely with other agencies such as social housing providers, youth offending service, drug & alcohol service providers, local business, youth groups and voluntary organisations amongst others. The Partnership aims to bring together people and organisations that are committed to positively influencing crime and disorder in the district and encouraging pride in our local communities. By working together we can ensure that agencies are not working in isolation and that resources are targeted effectively where they are needed.

Equality and Diversity has been considered throughout formulation of this three year plan. The Safer North West Partnership (SNWP) is committed to serving all members of its communities effectively and an equality impact assessment has been conducted for this strategy.

The partnership aims to ensure fair and equal access to services and support irrespective of race, religion, sex, age, sexual orientation or disability.

Our vision for the Safer North West Partnership is to work together with those who live, work and visit North West Leicestershire to maintain and improve pride in our communities.

## **Our Priorities**

The priorities in this plan were identified using the Leicester, Leicestershire and Rutland Joint Strategic Partnership Assessment (2010-2011) which brings together analysis from a number of partner agencies. The strategic assessment includes information on levels of crime, views from the community on issues that matter to them and highlights any changes since the last assessment. The strategic assessment helps identify current and possible future crime, disorder and substance misuse trends.

After analysis of the strategic assessment, consideration was given to the most recent crime figures in the district and a workshop was held with partner agencies to decide the priorities and strategic direction of the partnership.

The partnership decided that for 2011-2014 we will focus on three key priorities which are supported by two cross cutting themes. For each priority we have identified the ways we will work to achieve them.

- **Priority 1: Tackling Crime**
- **Priority 2: Further Reducing Anti-Social Behaviour**
- **Priority 3: Supporting Pride in our Communities**

There will be two crosscutting themes which will be considered under each of the main priorities. The partnership has realised that in light of the recent Government Spending Review it is now more important than ever to work together to deliver value for money for the communities we serve. We also need to communicate our work to our communities in their preferred format to ensure that those who live, work and visit North West Leicestershire are aware of the partnership's work and how to access its support.

The two cross cutting themes we have identified are;

- **Value for Money**
- **Communications**

## **Priority 1- Tackling Crime**

Addressing crime and its causes should be at the heart of any good community safety strategy. It is now widely acknowledged that an effective approach to tackling crime is no longer centred purely on enforcement by the police. A more sophisticated approach needs to be taken which places crime in its wider context and addresses its underlying causes. This is why the partnership aims to tackle crime by utilising the skills and tools of all its constituent partner agencies.

### **How will we tackle crime?**

- Focus on hotspots; we will need to be flexible to respond to emerging hotspots, but will begin by looking at violent crime linked to the night time economies in Coalville and Ashby.
- Target high profile events; such as Download Festival and motorsport events at Donington Park.
- Support CCTV in our town centres.
- Work to reduce re-offending by supporting integrated offender management (IOM).
- Work to reduce domestic abuse, including supporting the MARAC process for high risk, often repeat, victims of domestic abuse.
- Promote seasonal crime messages and publicise success.
- Provide value for money by working closely with partners to avoid duplication of effort.

### **Groups which will support delivery;**

Domestic Abuse Forum  
CCTV Operations Group  
Multi-Agency Risk Assessment Conference (MARAC)  
Neighbourhood Watch (NHW)  
Multimedia Group

### **How will we measure success?**

- Overall crime figures in the district are reduced
- The number of repeat domestic abuse cases referred to MARAC is down
- Public awareness is raised as we continue to inform our communities about crime reduction measures.

## **Priority 2- Further Reducing Anti-Social Behaviour (ASB)**

Over the past year ASB in the district has reduced by 25%. The partnership wishes to recognise this success and to build on it with further reductions.

Antisocial behaviour is defined as any aggressive, intimidating or destructive activity that damages or destroys another person's quality of life. Anti-social behaviour can ruin the lives of those who live in the communities where it is committed and the partnership is committed to reducing the harm caused by such incidents.

### **How will we further reduce ASB?**

- We will fully implement new Home Office ASB Principles by;
  - creating an effective call handling system where each individual has a log of complaints created from the very first call
  - introducing risk assessment tools to quickly identify the most vulnerable victims
  - installing IT systems to share information on cases between agencies, removing the need for meetings
  - agreeing a protocol across all local agencies setting out how they will manage cases
  - engaging with the community to clearly establish the issues which are causing the most harm to individuals and neighbourhoods, and setting out how the police, other local agencies and the public can work together to address them.

By adopting these measures and others we will be able to work together more effectively to deal with anti-social behaviour.

- Encourage more young people to engage in positive activities such as community projects and sporting activities.
- We will educate young people and adults on what constitutes anti-social behaviour and its consequences.
- We will improve public perception and confidence by communicating what the partnership can do to reduce ASB.
- The partnership will explore opportunities to promote successful resolutions to the public as a matter of course.
- Value for money will always be considered in partnership decisions relating to ASB.

### **Groups which will support delivery;**

Joint Action Group (JAG)  
Community Forums

### **How will we measure success?**

- Public confidence that effective action is being taken against ASB increases.
- As a result, we expect an increase in the reporting of low-level anti-social behaviour.
- An increase in the numbers attending diversionary activities arranged by partnership agencies.

### **Priority 3- Supporting Pride in our Communities**

There is often a strong correlation between crime and disorder in communities and pride. People who are proud to live in a particular neighbourhood are more likely to feel engaged and connected to their environment. They are likely to be less tolerant of anti-social behaviour, crime and disorder and more prone to work with partnership agencies to stamp it out. The District Council have also recognised how important pride in the community is and have included it in the Council Delivery Plan.

Part of the work under this priority will be to reduce the harm caused by drugs and alcohol in communities by working closely with substance misuse service providers. As an element of supporting community pride and wellbeing we will work with partner agencies to improve road safety in the district. Analysis shows that young drivers and motorcyclists are massively over represented in collisions on the roads of North West Leicestershire.

We will also ensure that our decisions are cost-effective and deliver value for money for our communities.

#### **How will we support pride in our communities?**

- We will work to reduce the harm caused by drug and alcohol misuse in our local communities.
- Support projects designed to improve community pride.
- We will listen and address local concerns which may be a barrier to pride in all communities (and support the young people's Active Involvement Strategy)
- Support the work of road safety groups which are working to reduce casualties on roads in the district.
- Communicate good news stories.

#### **Groups which will support delivery;**

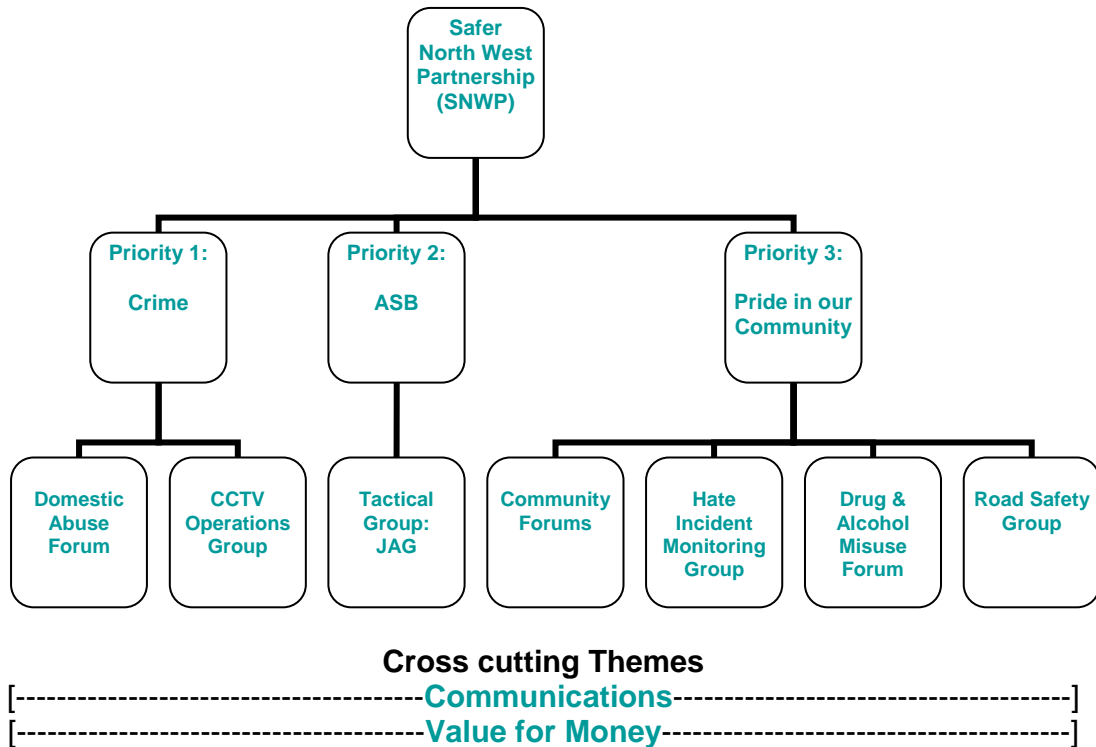
Drug & Alcohol Misuse Forum  
Community Forums  
Hate Incident Monitoring Group (HIMP)  
Road Safety Groups

#### **How will we measure success?**

- Clients who have received substance misuse treatment have outcomes which address their specific needs.
- We will support at least 8 community projects each year.
- Casualties on our roads will be reduced
- The press and the public are fully engaged and promote the pride agenda.

## Delivering the Strategy

The diagram below illustrates how the Community Safety Strategy will be delivered by the Safer North West Partnership. In addition, the partnership will be supported by a number of overarching countywide groups.



The Partnership has access to a variety of funding streams and resources will be allocated against the priorities in the strategy. Projects will always be evaluated and must demonstrate value for money.

## Glossary

- ASB:** Anti-Social Behaviour
- CCTV:** Closed Circuit Television
- CDRP:** Crime and Disorder Reduction Partnership
- CSP:** Community Safety Partnership
- HIMP:** Hate Incident Monitoring Project
- IOM:** Integrated Offender Management
- JAG:** Joint Action Group
- MARAC:** Multi-Agency Risk Assessment Conference (which discusses high risk domestic abuse cases and puts measures in place to reduce harm)
- NHW:** Neighbourhood Watch
- PiSC:** Partnership in Safer Communities
- SNWP:** Safer North West Partnership