

## Planning Newsletter

Issue 3 - April 2011

### Welcome

Welcome to the third Planning Newsletter. The newsletters are intended to inform you of progress with our Local Development Framework, and to provide an update on any national or regional planning issues that may impact on North West Leicestershire and surrounding areas.

### What's in this Issue?



The following topics are addressed in this issue:

- Core Strategy Update
- New Supplementary Planning Documents
- Proposed abolition of Regional Spatial Strategies
- The Localism Bill
- Evidence Base
- National Planning Policy Framework
- Feedback and Further Information

### Core Strategy Update – Cabinet Report 1<sup>st</sup> March 2011

The Council is continuing to develop its Core Strategy. To this end a report was presented to the Council's Cabinet on 1<sup>st</sup> March 2011. The report covers the revocation of the Regional Spatial Strategy, the Localism Bill and potential housing figures and housing distribution.

A full copy of the Cabinet Report can be viewed [here](#).

In terms of the Local Development Framework (LDF), the Government expects that local planning authorities will continue to make progress on the preparation of their LDFs. It is essential that the Council makes progress as soon as possible in order that a strategy can be put in place to guide decisions on future development.

We will be undertaking a further round of consultation in the near future to address some of the issues raised in the above Cabinet Report.



### New Supplementary Planning Documents

Supplementary Planning Documents (SPDs) form part of the Local Development Framework and are an important consideration in determining planning applications. SPDs are not part of the statutory Development Plan, unlike Development Plan Documents.

SPDs can cover a range of issues, some deal with a specific topic or type of development, while others are site or area-specific. The guidance in these documents expands upon or provides further detail to support policies in higher level Development Plan Documents or saved Local Plan Policies.

On 18<sup>th</sup> January 2011, the Council's Cabinet adopted a Retail SPD and an updated Affordable Housing SPD. A link to both of these documents and their accompanying Sustainability Appraisals, Statements of Regulation and SPD matters is provided below.

[http://www.nwleics.gov.uk/pages/supplementary\\_planning\\_documents](http://www.nwleics.gov.uk/pages/supplementary_planning_documents)

### The Proposed Abolition of the Regional Spatial Strategy

With regards to the status of the Regional Spatial Strategy (RSS), the Coalition Government has advised all Local Planning Authorities that it is still the intention to abolish RSS and that this should be a material consideration in making planning decisions.

### The Localism Bill

The Localism Bill was published on 13th December 2010. It is a wide-ranging bill which has a variety of implications for local authorities, including a number of provisions relating to planning.

The Government has made it clear that the philosophy behind the Localism Bill is to "return power to local communities". Key amongst the planning matters included in the Bill to deliver this is the promised revocation of RSS (as detailed above).

In addition, the Bill proposes the introduction of Neighbourhood Development Plans (NDP). These are to be prepared by local communities (either via a Parish/Town Council or a Neighbourhood Forum) and following a referendum and adoption, will form part of the Development Plan for an area (together with the various Development Plan Documents prepared as part of the LDF).

Whilst the Bill proposes some changes to LDFs, including making Inspector's Reports non-binding (Inspectors Reports are currently binding upon the local planning authority)

## The Localism Bill continued...

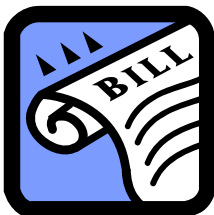
and a number of minor procedural matters, the key point to note is that LDFs are to remain in place and local authorities are being encouraged to continue to bring forward their LDFs as speedily as possible.

It is currently anticipated that the Bill will complete its passage through Parliament later this year. Whilst no firm date has been established for the enactment of the provisions of what will, by then, be the Act, the Government has previously suggested April 2012 as a possible date.

At such point in time as the provisions of the Act are enacted, the RSS will no longer form part of the Development Plan and the Council will no longer be bound by its various provisions.

Another key provision in the Bill is a proposal to introduce a duty of co-operation for local planning authorities to engage constructively and on an on-going basis in respect of the preparation of: Development Plan Documents, Local Documents or other activities which support the planning of development. This has potential implications for how the Council takes forward preparation of its Core Strategy.

The Localism Bill can be viewed [here](#).



## Evidence Base

Since the publication of the previous newsletter, the following evidence base documents have been completed or are nearing completion. These documents will inform the LDF.

### Landscape Character Assessment – August 2010

The Study assesses the landscape value of land around the settlement fringes of Ashby de la Zouch, Castle Donington, Coalville, Ibstock, Kegworth and Measham. The Study identifies the most distinctive landscapes and those which are important for the setting of settlements. To view the full document, please click [here](#).

### Climate Change Viability Assessment – December 2010

This document provides advice to the Council in respect of the provision of renewable energy within new developments and the viability of doing so along with other related issues.

A full copy of the assessment can be viewed [here](#).

### Detailed Water Cycle study

The Council has commissioned consultants to undertake a Detailed Water Cycle Study to help identify solutions to the River Mease issue. The Study will also consider the need for any additional water infrastructure to support development.

A final report is expected in the Summer.

## Evidence Base continued...

### Leicester & Leicestershire Housing Figures Methodology

The Localism Bill is proposing to introduce a duty of co-operation in the preparation of Development Plan Documents. Housing requirements have implications beyond the District boundary and cut across the whole of the Leicester and Leicestershire Housing Market Area. To assist with this duty of co-operation, a study has been jointly commissioned by the County Council (as lead), Leicester City Council and the other Leicestershire planning authorities to develop an evidence base and planning framework to determine locally-derived housing figures in light of emerging national policy. The consultants are expected to produce their final report in the summer. [It should be noted that the study will NOT recommend housing figures, but is a technical exercise which will provide a common methodology which can be used by the different local planning authorities to assist in identifying an appropriate housing figure whilst having regard to the wider cross Housing Market Area implications.]

## National Planning Policy Framework (NPF)

Current planning policy for planning and the environment is set out in Planning Policy Statements (PPS) and Planning Policy Guidance (PPG). The Government has committed to publish and present to Parliament a simple and consolidated national planning framework covering all forms of development and setting out national economic, environmental and social priorities. This would replace all Planning Policy Statements and Planning Policy Guidance Notes.

DCLG says it will give local people and communities 'far more ability to determine the shape of the places in which they live by radically reforming the planning system'.

A draft of the NPF is expected summer 2011.

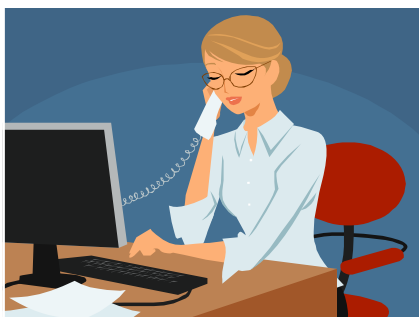
More information on the NPF can be viewed [here](#).



## Feedback

In order to make subsequent newsletters/e-mails as informative and timely as possible, we are seeking your views on how communication can be most effective

Have you found the Newsletter useful? Do you have any suggestions on how we can improve it?



## How to Contact us:

### **By Post:**

Planning Policy  
North West Leicestershire District Council,  
Council Offices, Whitwick Road,  
Coalville, Leicestershire, LE67 3FJ

### **By Email:**

[planning.policy@nwleicestershire.gov.uk](mailto:planning.policy@nwleicestershire.gov.uk)

### **By Telephone:**

01530 454684

## How to Get Involved

If you are not already involved in the preparation of our LDF but would like to be, your details can be included on the Council's Consultation Database. This will ensure you are notified of progress and consultations regarding the LDF. Please fill out the application form overleaf if you are interested.



### **Data Protection Act 1998**

- Personal data supplied on this form will be used in accordance with North West Leicestershire District Council's notification under the Data Protection Act 1998 and in compliance with the Freedom of Information Act 2000 for the purpose of Advertising, Marketing, Public Relations, General Advice Services .
- The North West Leicestershire District Council will treat all information as confidential and is committed to respecting your privacy.
- You have the right to access your personal data and rectify any inaccuracies.
- For further information on how your information is used, how we maintain the security of your information and your rights to access information that we hold on you, please contact:

Data Protection Officer,  
North West Leicestershire District Council,  
Council Offices,  
Whitwick Road,  
Coalville,  
Leicestershire,  
LE67 3FJ

E-Mail [customer.services@nwleicestershire.gov.uk](mailto:customer.services@nwleicestershire.gov.uk)

### Feedback and Further Information

If you are not already involved but would like to be please fill out the form below and send your details to us via the 'How to contact us' methods detailed on the previous page.

TITLE :      Mr            Mrs            Miss            Ms

OTHER       

FIRST NAME   

SURNAME       

ADDRESS       

POSTCODE     

E-MAIL           

TELEPHONE    

NUMBER           

Post To:  
Planning Policy,  
North West Leicestershire District Council  
Council Offices, Whitwick Road  
Coalville, Leicestershire, LE67 3FJ

How would you like to be contacted? Please tick the relevant boxes.

Post     E-mail

How often you would like to be contacted by the planning policy department?

Quarterly  
 When there is something major to report

Are you a?

Local Resident  
 Landowner  
 Developer  
 Local Business  
 Represent a local organisation

-----  
DATE

/   /

•We would like to send you information when there is something major to report. If you do **NOT** wish to receive LDF Information, please tick the box

•Wherever possible, we would like to save resources by giving you information when there is something major to report , by e-mail , instead of by mail. Tick here if you would prefer **NOT** to receive information by e-mail.

If you do not want us to use your information for direct marketing purposes, please tick this box .