

ENVIRONMENT ACT 1995 PART IV

Section 83 (2) (b)

THE NORTH WEST LEICESTERSHIRE DISTRICT COUNCIL

**M1 AIR QUALITY MANAGEMENT AREA (nitrogen dioxide)
REVOCATION ORDER 2004**

By an Order dated 23rd April 2001 - North West Leicestershire District Council ("the Council") made the M1 Air Quality Management Area Order 2001 ("the 2001 Order").

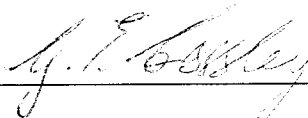
The Council is satisfied that as a result of its Stage 4 Air Quality Review and Assessment dated December 2003, it appears that in certain areas the subject of the 2001 Order, for reasons both of the current and projected annual levels of nitrogen dioxide, the air quality standards are likely to be achieved by 31st December 2005 (being the relevant period described by the Air Quality [England] Regulations 2000).

Therefore, the Council, in exercise of the powers conferred on it by Section 83 (2) (b) of the Environment Act 1995, hereby makes the following Order, amending the Air Quality Management Area (for nitrogen dioxide) Order 2001 made on 23rd April 2001.

It is hereby ordered that:

1. The area on the attached map, edged in blue, which forms part of the Order known as the M1 Air Quality Management Area 2001 shall be amended.
2. The area on the attached map (Map 2) shall now form the boundaries of the M1 Air Quality Management Area.
3. The Order shall be cited as the M1 Air Quality Management Area (nitrogen dioxide) Amendment Order 2004.
4. The property lists also attached are domestic properties currently within the M1 Air Quality Management Area.
5. The Order shall come into force on *26th July* 2004.

Signed Head of Environmental Protection:



Date:

26th July 2004

B E Wolsey Dip TP, Dip Arch Cons, MRTPI – Manager of Planning and Environment Division

Address1	Address2	Address3	Address4	Address5	Postcode
Molehill Farm,	Ashby Road,	Kegworth,	Derbyshire.	DE74 2DL	
Rosehill Cottage,	Smithy Lane,	Long Whatton,	Loughborough,	Leicestershire.	LE12 5BE
Westward Farm,	79 West End,	Long Whatton,	Loughborough,	Leicestershire.	LE12 5DW
55 West End,	Long Whatton,	Loughborough,	Leicestershire.	LE12 5DW	
57 West End,	Long Whatton,	Loughborough,	Leicestershire.	LE12 5DW	
59 West End,	Long Whatton,	Loughborough,	Leicestershire.	LE12 5DW	
61 West End,	Long Whatton,	Loughborough,	Leicestershire.	LE12 5DW	
63 West End,	Long Whatton,	Loughborough,	Leicestershire.	LE12 5DW	
West Barn,	81 West End,	Long Whatton,	Loughborough,	Leicestershire.	LE12 5DW
Leacroft Bungalow,	Copt Oak Road,	Markfield,	Loughborough,	Leicestershire.	
Leycroft Cottage,	Copt Oak Road,	Markfield,	Leicestershire.	LE67 9PJ	
Peppers Cottage,	Copt Oak Road,	Markfield,	Leicestershire.	LE67 9PJ	
The Old Vicarage,	Copt Oak Road,	Markfield,	Leicestershire.	LE67 9PJ	
67 West End,	Copt Oak Road,	Markfield,	Leicestershire.	LE67 9PJ	
Upper Mole Hill Farm,	Long Whatton,	Loughborough,	Leicestershire.	LE12 5DW	
1 The Terrace,	off Ashby Road,	Kegworth,	Derbyshire.		
2 The Terrace,	Copt Oak Road,	Markfield,	Leicestershire.	LE67 9PJ	
3 The Terrace,	Copt Oak Road,	Markfield,	Leicestershire.	LE67 9PJ	
4 The Terrace,	Copt Oak Road,	Markfield,	Leicestershire.	LE67 9PJ	
5 The Terrace,	Copt Oak Road,	Markfield,	Leicestershire.	LE67 9PJ	
6 The Terrace,	Copt Oak Road,	Markfield,	Leicestershire.	LE67 9PJ	
7 The Terrace,	Copt Oak Road,	Markfield,	Leicestershire.	LE67 9PJ	
Corner Farm,	Copt Oak Road,	Markfield,	Leicestershire.	LE67 9PJ	

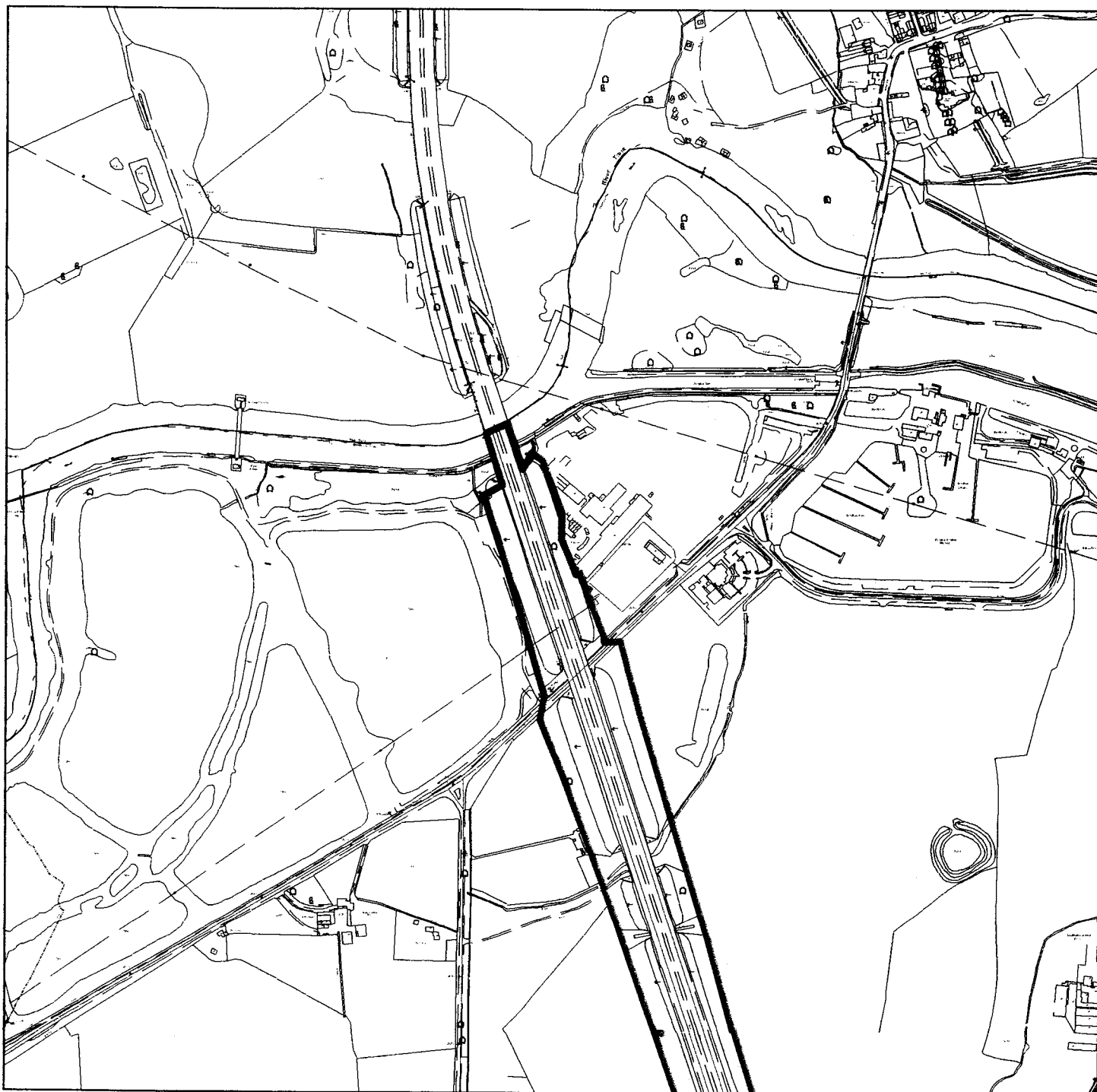
Also: The Occupier(s),
Mole Hill Farm,
Ashby Road,
Kegworth,
Derbyshire.
DE74 2DL

The Occupier(s),
Upper Mole Hill Farm,
off Ashby Road,
Kegworth,
Derbyshire.
DE74 2DL

M1 AQMA (Nitrogen Dioxide) Revocation Order



GIS by ESRI (UK)



Scale : 1:8325

Reproduced from the Ordnance Survey map with the permission of the Controller of Her Majesty's Stationery Office © Crown Copyright 2000.

Unauthorised reproduction infringes Crown Copyright and may lead to prosecution or civil proceedings.

Produced using ESRI (UK)'s MapExplorer 2.0 - <http://www.esriuk.com>

Organisation	Not Set
Department	Not Set
Comments	
Date	26 July 2004
SLA Number	Not Set

M1 AQMA (Nitrogen Dioxide) Revocation Order



GIS by ESRI (UK)



Scale : 1:8325

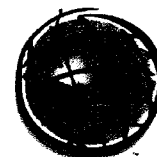
Reproduced from the Ordnance Survey map with the permission of the Controller of Her Majesty's Stationery Office © Crown Copyright 2000.

Unauthorised reproduction infringes Crown Copyright and may lead to prosecution or civil proceedings.

Produced using ESRI (UK)'s MapExplorer 2.0 - <http://www.esriuk.com>

Organisation	Not Set
Department	Not Set
Comments	
Date	26 July 2004
SLA Number	Not Set

M1 AQMA (Nitrogen Dioxide) Revocation Order



GIS by ESRI (UK)



Scale : 1:8325

Reproduced from the Ordnance Survey map with the permission of the Controller of Her Majesty's Stationery Office © Crown Copyright 2000.

Unauthorised reproduction infringes Crown Copyright and may lead to prosecution or civil proceedings.

Produced using ESRI (UK)'s MapExplorer 2.0 - <http://www.esriuk.com>

Organisation	Not Set
Department	Not Set
Comments	
Date	26 July 2004
SLA Number	Not Set

M1 AQMA (Nitrogen Dioxide) Revocation Order



GIS by ESRI (UK)



Scale : 1:8325

Reproduced from the Ordnance Survey map with the permission of the Controller of Her Majesty's Stationery Office © Crown Copyright 2000.

Unauthorised reproduction infringes Crown Copyright and may lead to prosecution or civil proceedings.

Produced using ESRI (UK)'s MapExplorer 2.0 - <http://www.esriuk.com>

Organisation	Not Set
Department	Not Set
Comments	
Date	26 July 2004
SLA Number	Not Set

M1 AQMA (Nitrogen Dioxide) Revocation Order



GIS by ESRI (UK)



Scale : 1:8325

Reproduced from the Ordnance Survey map with the permission of the Controller of Her Majesty's Stationery Office © Crown Copyright 2000.

Unauthorised reproduction infringes Crown Copyright and may lead to prosecution or civil proceedings.

Produced using ESRI (UK)'s MapExplorer 2.0 - <http://www.esriuk.com>

Organisation	Not Set
Department	Not Set
Comments	
Date	26 July 2004
SLA Number	Not Set

M1 AQMA (Nitrogen Dioxide) Revocation Order



GIS by ESRI (UK)



Scale : 1:8325

Reproduced from the Ordnance Survey map with the permission of the Controller of Her Majesty's Stationery Office © Crown Copyright 2000.

Unauthorised reproduction infringes Crown Copyright and may lead to prosecution or civil proceedings.

Produced using ESRI (UK)'s MapExplorer 2.0 - <http://www.esriuk.com>

Organisation	Not Set
Department	Not Set
Comments	
Date	26 July 2004
SLA Number	Not Set

M1 AQMA (Nitrogen Dioxide) Revocation Order



GIS by ESRI (UK)



Scale : 1:8325

Reproduced from the Ordnance Survey map with the permission of the Controller of Her Majesty's Stationery Office © Crown Copyright 2000.

Unauthorised reproduction infringes Crown Copyright and may lead to prosecution or civil proceedings.

Produced using ESRI (UK)'s MapExplorer 2.0 - <http://www.esriuk.com>

Organisation	Not Set
Department	Not Set
Comments	
Date	26 July 2004
SLA Number	Not Set

M1 AQMA (Nitrogen Dioxide) Revocation Order



GIS by ESRI (UK)



Scale : 1:8325

Reproduced from the Ordnance Survey map with the permission of the Controller of Her Majesty's Stationery Office © Crown Copyright 2000.

Unauthorised reproduction infringes Crown Copyright and may lead to prosecution or civil proceedings.

Produced using ESRI (UK)'s MapExplorer 2.0 - <http://www.esriuk.com>

Organisation	Not Set
Department	Not Set
Comments	
Date	26 July 2004
SLA Number	Not Set