

**A PLAY STRATEGY
FOR
NORTH WEST LEICESTERSHIRE
2008 - 2011**



August 2008

CONTENTS

1. Foreword

2. Introduction

- 2.1 Purpose
- 2.2 Scope
- 2.3 What is Play?
- 2.4 Our Vision for Play

3. Making a case for Play

- 3.1 The importance of Play
- 3.2 The contribution Play makes to other agendas

4. Context

- 4.1 Profile of North West Leicestershire
- 4.2 Play in national, regional and local strategic contexts

5. Key successes from 2005-2008 Play Strategy

6. Current provision for Play

- 6.1 North West Leicestershire District Council
- 6.2 Open Space Strategy
- 6.3 Parish Councils
- 6.4 Voluntary Sector
- 6.5 Special needs groups
- 6.6 Youth Services
- 6.7 Private Sector
- 6.8 Play Audit 2008

7. Development of the strategy

- 7.1 Approach to consultation
- 7.2 Consultation Summary

8. Ambitions for play

- 8.1 Key priorities and ambitions

9. Evaluation

- 9.1 Monitoring and Review
- 9.2 Performance Indicators

10. Appendices

- Appendix 1: 2005-2008 Play Strategy Progress Report
- Appendix 2: 2008 Coalville Specials Play Area and Open Space Audit
- Appendix 3: Parish Council Consultation
- Appendix 4: Play Partnership Consultation
- Appendix 5: Young People Consultation
- Appendix 6: Recommendations from PPG17 Open Spaces Plan
- Appendix 7: Governance structure

1. Foreword

I am delighted to introduce the refreshed North West Leicestershire Play Strategy for 2008-2011 for our District.



North West Leicestershire District Council can demonstrate a long term commitment to the development of children's play through the revision of this Play Strategy, the employment of a Children's Services Co-ordinator and significant investment into play facilities and activities over a number of years.

We consider ourselves to be a proactive authority that is working in partnership with children & young people and a wide range of key agencies to ensure the continual development of quality and accessible play opportunities.

Our vision for Play is as follows;

"...to provide good quality opportunities for children and young people to play and learn within North West Leicestershire which make the District a great place for children and young people to grow up and live"

PRIORITY 1	AMBITION
To promote the value of play	<ul style="list-style-type: none"> • Improve partnership working to deliver effective play promotions and events • Improve communication, branding and publicity of play
PRIORITY 2	AMBITION
To sustain and develop local play opportunities	<ul style="list-style-type: none"> • Develop a youth club in every town/village • Sustain and develop local holiday playschemes and activities including mobile play services • Ensure play opportunities feature within Children Centres/Extended Schools
PRIORITY 3	AMBITION
To develop creative play spaces, parks and recreational areas	<ul style="list-style-type: none"> • Maintain and improve existing local play spaces and develop a range of play activity 'hubs' • Work with planners, developers and transport officers to create neighbourhoods that meet the needs of children and families • Improve safety in parks and play areas
PRIORITY 4	AMBITION
To maintain a strong play development infrastructure	<ul style="list-style-type: none"> • To support the continued development of NWL CYP Forum • Enhance opportunities for play qualifications, volunteering and support for play in the voluntary sector

Our Play Partnership is well established and is the monitoring body for the Play Strategy overseeing its development and delivery against our key priorities and ambitions.

We hope you find our strategy exciting, developmental and creative, we certainly feel that it addresses the identified needs from within our District and our commitment to involve a wide range of partners in the delivery of play.

Christine A Fisher

**Christine Fisher, Chief Executive
North West Leicestershire District Council**

2. Introduction

2.1 Purpose

The purpose of the 2008-2011 Play Strategy for North West Leicestershire is to establish a strategic framework and direction for the next three years for all matters relating to play in the District.

This strategic framework will provide practical delivery of projects and programmes to ensure all types of play provision will be of a consistent quality and coverage across the District; and is in direct response to consultation with children, young people, the wider community and our partners.

2.2 Scope

This document will seek to directly benefit all children and young people in North West Leicestershire between the ages of 0-19 years old.

All aspects of Play are included for in this strategy as follows;

- traditional fixed play sites
- natural play areas
- mobile play facilities
- playschemes and workshops
- out-of-school clubs
- soft play facilities
- creative activities such as art and dance
- informal, formal, supervised and unsupervised play opportunities

2.3 What is Play?

We use 'play' in this document to describe what children and young people do when they follow their own ideas and interests in their own way and for their own reasons, balancing fun with a sense of respect for themselves and others.

(Fair Play: A consultation on the play strategy, DCSF 2008)

Key elements to remember are:

- Play is an internally focused pursuit
- Set and chosen by the individual and purely for their own reward and satisfaction.
- A mixture of planned and spontaneous
- Play accounts for a large proportion of leisure activity for children and young people.
- Play is accommodating and inviting

2.4 Our Vision for Play

"...to provide good quality opportunities for children and young people to play and learn within North West Leicestershire which make the District a great place for children and young people to grow up and live"

3. Making a case for Play

3.1 The importance of Play

Play is an essential part of children's life and vital to their development. It is the way children explore the world around them and develop practical skills.

Through play children explore their world and their relationship with it. Play work has an important role in giving children and young people access to safe, stimulating, creative and caring environments (The New Charter for Children's Play, Children's Play Council)

The *New Charter for Children's Play* outlines some of the benefits of play:

- Play promotes children's development, learning, creativity and independence
- Play enables children to learn communication, negotiation and listening skills
- Play keeps children healthy and active
- Play fosters social inclusion
- Play allows children to find out about themselves, their abilities and their interests
- Play is therapeutic and good for mental health
- Play gives children the chance to let off steam and have fun
- Community play facilities can reduce youth crime and vandalism

3.2 The contribution Play makes to other agendas

Play is a fundamental part of childhood. It is so intrinsic to all aspects of a child's development and should never be viewed in isolation. It is inextricably linked to, and underpins, many key agendas and delivers on several different levels.

The benefits play has to offer to:

- Health and Wellbeing: improved access to play opportunities help address issues around childhood obesity
- Education (informal/learning) and intellectual development: through play children learn numeracy, literacy and motor skills through non formal means
- Safer Communities/Crime Reduction: demonstrable links to youth diversion, Liveability (Cleaner, Safer, Greener): improved quality of play spaces
- Every Child Matters and Children's Trusts: Play is intrinsic to and delivers against the 5 key outcomes: Being healthy; Staying safe; Enjoying and achieving; Making a positive contribution; Achieving economic well-being
- Community regeneration and engagement: through consultation
- Social Inclusion: parental responsibilities, playing together, Child Poverty: contribution to a child's quality of life, personal & social development and learning experiences
- Cultural Strategies, including Sport & the Arts: close links to sport activities and creative sessions
- Lifelong Learning: training for play workers/volunteers, parental roles and responsibility, education by health visitors and midwives, accreditation and qualifications

4. Context

4.1 Profile of North West Leicestershire



A former mining area, North West Leicestershire comprises of both rural and urban areas and includes a significant part of the National Forest covering an area of 27,933 acres. The National Forest also embraces 200 square miles of the Midlands and is transforming our landscape, which is creating many leisure opportunities.

The district of North West Leicestershire is a mixture of affluence with pockets of deprivation and the population is based around two main towns of Coalville and Ashby-de-la-zouch. (Growing Together: A cultural strategy for North West Leicestershire District Council, 2002

In 2006, the current population of persons living in North West Leicestershire was 89,586

This can be broken down into the following age categories:

Age group	Population	Percentage of total population
0 – 4 years	5,239	5.8%
5 – 12 years	8,549	9.5%
13 – 19 years	13,386	14.9%
20 – 24 years	4,323	4.8%
Total	31,496	35.2%

4.2 Play in local, regional and national strategic contexts

National

Nationally, there is a growing recognition of the importance of specific representation for children and young people in policy development with particular reference to the important role play has on a child's development. This has increased significantly over the last 3 years since the first Play Strategy for North West Leicestershire was produced.

In 2002, the DCMS commissioned a research programme into Children's Play by the Children's Play Council. The report highlighted a lack of strategic direction and a long-term decline in investment for the provision of Children's Play. Also identified were the adverse consequences of this in terms of children and young people's physical, emotional and social health. The key recommendation was that there should be a National Play Strategy for England to guide and support local authorities, voluntary organisations, community groups and other local agencies in providing a comprehensive range of free, inclusive spaces and opportunities for children's play.

Getting Serious About Play In 2004, the report of the National Play Review, "Getting Serious About Play" (DCMS) 2004, chaired by Frank Dobson MP, recommended that a targeted strategic lottery programme for play provision should seek to create thousands of free, inclusive play spaces based on the needs and wishes of local children and young people.

It recommended that the investment should be long-term, sustainable and strategic, with local authorities being given responsibility for coordinating plans with local partners.

In January 2005, the government welcomed this review and its recommendations and announced that a cross-departmental strategic agenda for play would be established. In March 2005, the Big Lottery Fund announced a £155m fund to be based upon the Dobson recommendations with particular emphasis on strategic development.

Enjoy and achieve

In addition, the Minister for Children stated that play will receive greater attention within the Every Child Matters inspection framework, as a key aspect of the 'enjoy and achieve' outcome of the change for children programme. More access to active, outdoor play opportunities has also been identified within the Choosing Health Physical Activity Action Plan (DOH), as a key to combating childhood obesity making the play agenda a serious issue for all Councils, Children's Services, Local Strategic Partnerships and Children and Young People's Partnerships.

DCSF 10 year Children's Plan

In December 2007, the Secretary of State for Children, School and Families announced the development of the first ever National Children's Plan which aims to put the needs of families, children and young people at the centre of everything we do (Ed Balls, Secretary of State for Children, Schools and Families)

The Children's Plan sets out plans for the next ten years under each of the Department for Children, Schools and Families' strategic objectives.

Based on consultation, five principles underpin the Children's Plan:

- government does not bring up children – parents do – so government needs to do more to back parents and families;
- all children have the potential to succeed and should go as far as their talents can take them;
- children and young people need to enjoy their childhood as well as grow up prepared for adult life;
- services need to be shaped by and responsive to children, young people and families, not designed around professional boundaries; and
- it is always better to prevent failure than tackle a crisis later.

With reference to play, the Children's Plan commits £225 million over the next three years to:

- offer every local authority capital funding that would allow up to 3,500 playgrounds nationally to be rebuilt or renewed and made accessible to children with disabilities;
- support pathfinder to develop 30 new adventure playgrounds for 8- to 13-year-olds in disadvantaged areas, supervised by trained staff
- work with local authorities to ensure sites are stimulating, exciting, and attractive to children providing clear guidance on developing interesting and fun places to play and emphasise maintaining these sites
- publish a play strategy by summer 2008.

The draft of the Government's Play Strategy: Fair Play was circulated in April 2008 for full public consultation. A response to the strategy with reference to North West Leicestershire will be fed to Government via the East Midlands Play Forum network as a collective response to its proposal.

In essence the National Play Strategy outlines the Government's aim in relation to play is that:

- in every residential area, there is a variety of places to play, free of charge, supervised and unsupervised
- local neighbourhoods are, and feel like, safe, interesting places to play
- routes to children's play space as safe and accessible for all children and young people
- parks and open spaces are attractive and welcoming to children and young people, and are well maintained and well used
- children and young people have a clear stake in public space and their play is accepted by their neighbours
- children and young people behave in a way that respects other people and property
- children, young people and their families take an active role in the development of local play spaces; and
- play places are attractive, welcoming, engaging and accessible for all children and young people, including disabled children, children of both genders, and children from minority groups in the community.

Regional

At a regional level, the development of Play England infrastructure for the East Midlands is supporting the capacity, consistency and growth of the play sector for North West Leicestershire as well as raising the profile of the work being delivered by District Councils to a higher level.

Regional Play Officers for the East Midlands are a key liaison between play at a local level and developments happening within central government and other partners such as health

An East Midlands Play Forum has recently been set up to meet quarterly discussing common issues and themes surrounding the development of play including; funding, training, strategy development, consultation, good practice sharing as well as updates from the wider national context.

Whilst this group is still evolving it is seen as a key mechanism to enable a strong voice on the issues surrounding play both locally and nationally.

County

Local Area Agreement

Leicestershire's Local Area Agreement (LAA) pulls together priorities for Leicestershire based upon existing priorities and aims identified within the County. The idea of the LAA is a co-ordinated way to deliver a range of high level outcomes and are focused under the following blocks;

- Healthier Communities
- Older People
- Children and Young People
- Safer Communities
- Stronger Communities
- Cleaner and Greener Communities
- Economic Development and Enterprise

The Children and Young People's Block of the LAA aims to deliver improved outcomes for children and young people with specific focus on providing additional targeted support to vulnerable children, young people and families.

The specific indicator for play is:

"increased number of disabled children enabled to use inclusive play and leisure facilities"

As well as this we also recognise the importance of the vision as stated by Article 23 on the UN Convention on the Rights of a Child

"Parties recognize that a mentally or physically disabled child should enjoy a full and decent life, in conditions which ensure dignity, promote self-reliance and facilitate the child's active participation in the community."

Extended Services

Extended services in schools and the National Children's Centre Programme are a national priority in providing a 'core offer' of services to children and young people and families in most need within our communities. The core offer of services includes:

- Access to early learning and childcare
- Mainstream child/family/parenting support (Previously Parental Support)
- Targeted child/family/ parenting support via CAF (Previously Quick & Easy Referral)
- Varied menu of out of school activities
- Community access to school buildings and facilities

Each element of this core offer will make reference to the need and development of safe and stimulating play environment for children, young people and families.

Within North West Leicestershire there is currently 1 purpose built Phase 1 Children's Centre and a further 6 Phase Two Children's Centres located within cluster areas of the District. The development of Phase 3 Children's Centres is currently being planned for completion by 2010.

By 2009, 75% of primary and secondary schools will provide extended out of hours services to deliver a wide range of support for children of different abilities and their parents.

The extended services agenda is a great opportunity to increase the current play provision offered in North West Leicestershire to the local community. Through the NWL Play Partnership we endeavour to be part of these developments and where possible have an influence on what activity takes place.

Local

Play opportunities within North West Leicestershire are delivered by a number of key organisations and partners. This group of agencies are detailed below with reference to their specialist areas of delivery.

The co-ordination of the work delivered on play is done via a multi agency Play Partnership who meet quarterly and oversee the development and delivery of this Strategy. The Partnership is represented by officers within the health, youth services, leisure, education, social care, private and the community/voluntary sector.

5. Key successes from the 2005-2008 Play Strategy

North West Leicestershire has been immensely successful in delivery of innovative and creative play opportunities for children and young people in the District over the last 3 years

This success is driven by strong partnership working with other organisations, the joint commitment to improve play and the understanding of its importance across the District.

As a local authority we have both driven a number of key developments whilst also supporting projects in partnership with a range of other organisations such as parish councils, tenants and residents associations and voluntary youth clubs.

Some key highlights to note are:

- 'Changing lives through play in North West Leicestershire'

Securing £200,000 from the Big Lottery Fund Children's Play Programme in 2006; the first local authority within the East Midlands to secure this funding.

This fund was used to support 16 individual projects across the District under 3 themes:

- Targeted Support
- Physical Play
- Community Engagement

Projects developed include fully mobile skate park facility for the rurally isolated areas within North West Leicestershire, development of a Toy Library Service to enhance the play opportunities to families in most need, fixed skate parks, play areas, and teen shelters as well as after school clubs, parent and toddler groups and a dedicated role of Play Assistant for North West Leicestershire District Council.

- Securing funds of over £100,000 for Section 106 developments and external grants to fund play, sport and recreation facilities in Council, parish and community areas.
- Supporting over 30 local summer playschemes to deliver activities for children during school holidays

A full report from the previous strategy is detailed in Appendix 1

6. Current Provision of Play in NWL

6.1 North West Leicestershire District Council

Within the District Council there is a strong commitment for the development of Children's Play made possible by the appointment of a Children's Services Co-ordinator to take the lead on this area of work for the Council.

Strategically; Children and Young People are one of the Councils Key Priorities for 2008-2011 and within this corporate priority is the recognition of the Big Lottery Fund Children's Play Programme successful bid in the March 2006

The key focus for play within North West Leicestershire District Council is

- **Children's Services;** management of the Big Lottery Fund Play Programme including Play Assistant, Mobile Skate Park, Toy Library etc. Advice support and guidance for organisations developing play opportunities
- **Leisure Facilities;** two Council owned facilities in Whitwick and Ashby and two dual use schemes at Ibstock and Castle Donington

- **Sports Development;** deliver a comprehensive programme of play and recreational activities using various projects such as Positive Futures and the provision of leaders at summer playschemes (Buy a Leader).
- **Neighbourhood Management;** work to target inequalities of provision and opportunity in the most deprived wards of the district known as priority neighbourhoods across North West Leicestershire. Action Teams have now been formed in these areas to ensure a multi agency approach to direct and align services with the needs of these communities identified through data from Leicestershire's Local Area Agreement.

There are 7 District Neighbourhood Action Teams;

Ashby - (Westfields, Willesley and Nursery Farm estates)

Castle Donington - (Bosworth Road/Shields Cres, Hastings St area, Moira Dale)

Coalville Urban Area - (Coalville (Central Estate), Snibston (Ravenstone Road/Western Ave), Thringstone (Melrose Road area) & Whitwick (St Bernards Estate))

Greenhill - (Greenhill & Agar Nook Estate)

Ibstock - (Sunnyside Estate)

Measham - (Atherstone Road estate/ Dysons Close)

Moira - (Norris Hill, Albert Village)

- **Environment Division;** undertakes the development, maintenance and repair works to the Play areas in the Coalville Special Expense Area and to some Parish Play areas where the Parish Council have not adopted the site. The division is working with the Community Services Division to a 3 year Improvement Plan to renovate and update the current play and open spaces in the Coalville Area. The divisions staff undertake the inspection and maintenance works to the play areas and also the installation of some new/replacement equipment in the locality
- **Planning Division;** provision of new open space and recreation areas in new developments (informed by PPG17 Strategy), GIS mapping of provision in line with population predictions, securing s106 contributions for appropriate play and open space. Its requirements are to promote more sustainable development - by ensuring that open space, sports and recreational facilities (particularly in urban areas) are easily accessible by walking and cycling and that more heavily used or intensive sports and recreational facilities are planned for locations well served by public transport.

6.2 Open Space Strategy

Each local authority is strongly guided by PPG17 to produce an Open Space Strategy (OSS), based on a hierarchy of need from a thorough analysis of open space in the district.

The OSS is to be adopted as 'supplementary planning guidance'. By doing this the council can negotiate much more effectively with developers to maintain and enhance existing or provide new open spaces and play equipment.

These developer contributions, called Section 106 agreements, are made when the council negotiates planning permissions with developers over built environment schemes. The contributions may cover affordable housing, cultural facilities, widening a road junction or transport, depending on the needs of those who will be using the scheme. However, while this will be a major step forward for the district, play and

open space provision will still have to compete for developer contributions with the council's existing requirements which prioritise affordable housing. However, if play is 'not at the table' then it will not get any of these resources

Our completed Open Space Strategy is due to be completed in July 2008

6.3 The Parish Councils

The Parish Councils have their own responsibility for park and recreational maintenance and improvements, they also have powers to provide for children and youth within the communities and their budgets.

The Parish/Town Council's have the opportunity for advice and guidance with planning for play and support from the District Council, North West Leicestershire Council for Voluntary Services and Leicestershire Youth Service.

6.4 The Voluntary Sector

The Council for Voluntary Services based in Coalville operate and oversee a number of voluntary play work settings and a Community Play bus across the district, they also help and support voluntary member organisations with grant funding, committee structure, roles and responsibilities and training and a toy library service. Other national partner organisations with a remit for play and play services within the district include Preschool Learning Alliance, Scouts, Brownies, Libraries, and Football Association etc.

Voluntary sector partners include Preschools, Activity groups, Parent & Toddlers, After School groups.

Play schemes/pre-school/after school clubs/Drop in

The CVS (Council for Voluntary Services) employ a full time Outreach and Development Manager to co-ordinate various work for play with voluntary organisations in and around the district of North West Leicestershire. In addition to this they employ a number of play workers to help co-ordinate outreach rural schemes for children 8 –13 years, which operate after school and during school holidays.

Number of schemes operating within North West Leicestershire are ranging in this sector with the development of the children's centre programme also in a number of areas. Access to information on local provision of after school, playscheme, pre school, nursery care provision can be accessed more readily via the County Councils Family Information Service via the telephone

Uniformed Groups

A large number of uniformed groups including scouts, cubs, guides, brownies as well as faith groups run play activities for children and young people across the District. We recognise these groups as an invaluable resource to deliver play opportunities locally for a wide age range of children. These groups are often run and staffed solely by volunteers and therefore need ongoing support in development and delivery to ensure opportunities are sustained and continually improve to meet local needs.

Mobile play provision

The CVS operate a community play bus, (a converted double decker) which, travels around the district offering play opportunities for parents and their children under 5 years, also providing training, money advice, and parent support. In addition the play bus supports a traveller site and summer playschemes for young people during school holidays, it can be made available for hire for special occasions or events.

The mobile play team have transport, which enable holiday playschemes to operate in rural locations of the district where no other provision is available.

Funded through the Big Lottery Fund, Children's Play Programme a fully mobile skate park package can now operate across North West Leicestershire for rurally isolated children and young people. The skate park comprises of selection of ramps for all abilities of skateboard, BMX and inline skaters and is part of a trailer package fully staffed by mobile attendants.

6.5 Special needs groups

Within the district there are a few groups who offer specific play opportunities to children and young people with additional needs.

Those with special needs should be able to access the same play provision as an able bodied child helped with the improvements to the DDA this is becoming more possible and disabled children and young people are more frequent in mainstream play opportunities.

Currently in the district there is a recognised play scheme for young people 8yrs+ encountering a wide variety of needs, this is known as the Woodland Group. There is also a youth group, which operates once a week in the Greenhill Ward based in the youth centre.

A number of groups for autistic children and children with dyspraxia run activities using the local Hermitage Leisure Centre, Castle Donington Community College, Ivanhoe and Stephenson College respectively as venues for their group. Additional to this at there are various units set up within schools to provide for children with additional physical needs and those with behavioural needs.

Many schools are moving to extending their services to offer before and After School care, sessional or nursery care and other extra curricular activities within their communities.

6.6 The Youth Service

The Children and Young People's Service aim to provide informal education to address the issues affecting young people and to provide opportunity for young people to engage in fun and creative workshops.

They work mainly with 13-19's but also contribute a proportion of their time for work with 11-12 years and 20-25 years.

The core curriculum areas for youth work are:

- Participation and Inclusion
- Equality and Diversity

- Creativity and Challenge
- Health and Well-being
- Personal and Social Development
- Adulthood and Independence

The team is made up of a number of full time development workers, area coordinators and a large number of part time and detached youth workers.

Youth Clubs

Youth clubs in the district are a mixture of many statutory run clubs through The Children and Young People's Service for young people 11 – 25yrs and voluntary run youth clubs.

In North West Leicestershire there are currently 14 statutory youth clubs of which two clubs run 6 sessions per week, four run 3 sessions a week and the remainder run between 1 and 2 session every week.

Additional to this the Youth Service operates detached youth work in certain areas such as Appleby Magna, Albert Village, Ibstock, Valley Ward and Castle Donington. The detached work is flexible to meet the demands of the young people at varying times in the year.

Clubs run by volunteers in the district are becoming less and less due to restrictions from legislative requirements plus less people willing to volunteer their time.

In North West Leicestershire there are nine voluntary youth clubs operating one evening a week at Swannington, Worthington, Ashby de la Zouch, Whitwick, Battram, Coleorton, Donisthorpe, Oakthorpe and Osgathorpe. Additional to this there are some voluntary clubs run for children and young people through churches such as Ashby Youth For Christ and Crusader Group in Whitwick.

6.7 The Private Sector

Play providers in the private sector operate indoor soft play and outdoor play areas. They are often connected to pubs, restaurants and other commercial settings such as leisure centres, and arcades. These cater for younger children generally 0-8's and are used as an addition to the commercial focus.

Across the district play opportunities also exist in some of the Tourist attraction centres such as Conkers, Snibston Discovery Park, Sence Valley.

A number of private day nurseries are also available across the district

6.8 Play Audit 2008

A revised Play Audit of the parks, open space and play provision within Coalville Special Expense Area was conducted early in 2008.

The aim and purpose of the audit is to identify:

- Refurbishment and improvements needed on existing parks and play areas
- Suitable locations for new park, play and recreational spaces – 'play hubs'

The audit identifies a list of locations in order of priority for development as either HIGH or MEDIUM.

These projects will be formerly approved by the Coalville Special Expenses Working Party and potential resource will be delivered and identified from Parks Improvement Team Funding, Section 106 monies, Big Lottery Funding or funding available from external sources.

Full details of the Audit carried out can be found in Appendix 2 of this document

7. Community Engagement & Consultation

7.1 Approach to consultation

Consultation forms a key part of any strategy and is fundamental to ensuring it is relevant to meet the needs of the community and to driving it forward. Done well, it provides an evidence of need; identifies what is being done well - and what isn't; highlights gaps in provision; and ultimately raises the profile of the project and gets it on everyone's agenda.

Good community engagement is also crucial to the development of a successful strategy, to ensure the document and resulting action plan meets the needs of all stakeholders and potential users, and to ensure all partners have a 'buy in'.

In terms of identifying consultees for the Play Strategy, the potential audience was split into two distinct groups, each with their own set of needs, issues and ideas.

Firstly, there are the **Play Users**. These are defined as those who will actually be using the facilities provided by the delivery of the Play Strategy. Essentially, this group is comprised of the children and young people of North West Leicestershire. Their opinion and insight is fundamental to successful play provision, as the success of any project is most frequently measured in terms of numbers of users. There is no use in putting valuable resources into play provision which is neither required nor desired, thus creating further gaps in provision and a raft of failed schemes.

Play users were consulted in the following way

- Play Day 2003 and 2007
- Schools Out activities questionnaires 2008
- Big Lottery Fund Pre project questionnaire
- Community Play bus consultation with parents
- What Women Want event
- Neighbourhood Action Team data
- Triennial Survey
- Parish Plan Process
- Youth Council
- Positive Futures

Secondly, there are the **Play Providers**. In any given area, there are a wide range of partners delivering play provision across the district, and North West Leicestershire is no different. There are a multitude of representatives from the private, public and voluntary/community sectors, all who need to be engaged in the development of the strategy. Many of these partners experience significant barriers in providing for play, which ultimately impacts on the quality and quantity of play provision. They also have ideas for projects or initiatives which have come as a result of direct consultation from their users, but may require support in seeing them to fruition.

Play providers were consulted in the following way:

- Play Partnership Group
- Parish Council Survey
- Play Strategy Stakeholder Event Feb 2008

Key messages from this consultation were:

Play Users:

- More and better play grounds
- More places to hang out (teen shelters)
- Safer places to play
- More mobile sessions
- More playschemes
- Address social barriers (ASB, bullying, drugs, personal safety)
- Create places that encourage Fun, Adventure and Excitement
- Investigate opportunities for natural play

Play Providers:

- Help with consultation (esp. hard to reach groups)
- Coordination and communication of programmes/initiatives
- Sharing best practice
- More seating and bins in play areas
- Signposting, training and advice
- Better promotion and marketing for Play opportunities
- Help with fundraising
- Education (how to play for parents and children!)
- Safe travel plans
- Post installation support – events programme, coaching, creative play sessions
- Involve schools more (incl. extended schools as community hubs)
- Capacity-building and support for providers – assistance in, e.g consultation, fundraising, delivery and maintenance

8. Ambitions for play

This strategy document outlines key ambitions for the development of play opportunities for the next 3 years within North West Leicestershire based around 4 key priorities:

1. To promote the value of play
2. To sustain and develop local play opportunities
3. To develop creative play spaces
4. To maintain a strong play development infrastructure

A number of ambitions for 2008-2011 have alongside each priority focus on the

PRIORITY 1	AMBITION
To promote the value of play	<ul style="list-style-type: none"> • Improve partnership working to deliver effective play promotions and events • Improve communication, branding and publicity of play

PRIORITY 2	AMBITION
To sustain and develop local play opportunities	<ul style="list-style-type: none"> • Develop a youth club in every town/village • Sustain and develop local holiday playschemes and activities including mobile play services • Ensure play opportunities feature within Children Centres/Extended Schools
PRIORITY 3	AMBITION
To develop creative play spaces, parks and recreational areas	<ul style="list-style-type: none"> • Maintain and improve existing local play spaces and develop a range of play activity 'hubs' • Work with planners, developers and transport officers to create neighbourhoods that meet the needs of children and families • Improve safety in parks and play areas
PRIORITY 4	AMBITION
To maintain a strong play development infrastructure	<ul style="list-style-type: none"> • To support the continued development of NWL CYP Forum • Enhance opportunities for play qualifications, volunteering and support for play in the voluntary sector

9. Evaluation

9.1 Monitoring and Review

In order to ensure the Play Strategy 2008-2011 and accompanying Action Plan is being effectively delivered and remains appropriate to need, a structure of evaluation monitoring and review must be established, and an accountable body identified.

The Play Partnership is central to the delivery of the Play Strategy and will be responsible for ensuring the aims and objectives of the strategy and the targets set out in the action plan are met.

Evaluation Methodology:

- The Play Partnership will continue to meet quarterly to oversee progress and review/evaluate at key milestones
- An annual Progress Report will be provided for the Partnership at the end of each year of the strategy.
- Regular reporting back to LSP theme group will ensure strategic links where appropriate
- Annual Consultation with wider audience (play providers) will promote and celebrate the delivery of the strategy and create opportunities for feedback
- Specific consultation and engagement to be undertaken with Children and Young People, hard to reach/marginalised groups school councils, Youth Council etc to ensure all audiences are engaged

9.2 Performance Indicators

Indicative Performance Indicators are required to assess and measure the relative success of the Strategy delivery. They give a benchmark against which to evaluate and monitor improvements to play opportunities as delivered by the Play Strategy. It is envisaged that one of these performance indicators will become mandatory as part of the National 'magic 200' indicators for 2009/2010.

PI 1	Participation	Method of collection
Description	% of all children and young people engaging in 'free play' opportunities for a minimum 4 hours per week	Household Survey (e.g. Citizen's Panel) and School survey (e.g. School Sports Partnership)
PI 2	Access to a variety of Play facilities and spaces	Method of collection
Description	% children and young people having access to at least 3 types of play space or facility; at least one being a dedicated play space and all within easy walking/cycling distance	Open Space and Play Strategy audits GIS Mapping
PI 3	Quality of activity-based Play facilities and spaces	Method of collection
Description	The proportion of Play facilities and Play spaces meeting the quality criteria for 'excellent' and 'good' ratings (including those meeting NEAP/LEAP standards)	Open Space Strategy audit Play Facility audit Play Activities audit Local evaluation for outreach sessions Assess standards against given quality criteria
PI 4	Satisfaction	Method of collection
Description	% children and young people who think that the range and quality of play facilities and spaces they are able to access in their local neighbourhood is good/very good	Household survey (e.g. Citizen's Panel survey) School survey (School Sports Partnership)

PI 5	Increased Playscheme provision	Method of collection
Description	% increase in number and range of playscheme sessions on offer across the District	Attendance levels Number of sessions run Number of activities on offer
PI 6	Maintenance of fixed play sites	Method of collection
Description	% fixed play sites undergo monthly maintenance and safety checks	Centrally-held record sheets

Appendix 1

2005-2008 Play Strategy Report

This report details the delivery of actions carried out in 2005-2008 as identified in NWL Play Strategy 2005-2008 Action Plan.

This report makes a further acknowledgement of the Big Lottery Fund Children's Play Programme launched in March 2006 and how it is hoped to be utilised to further address the inequalities in North West Leicestershire with the £200,000 allocated to the District.

A number of projects have been developed and delivered following the development of the NWL Play Strategy 2005-2008.

There has been a significant positive impact from the development of a more coordinated approach to dealing with issues surrounding play inequalities and working with key partners to ensure effective joint working.

A further number of projects are also likely to be developed utilising the £200,000 allocation from the Big Lottery Fund Children's Play Programme enabling an even more comprehensive approach to delivering good quality play opportunities.

The progress to date has been tabulated under the headings within the Action Plan and encompasses the Play Strategy priorities as identified;

1. Improved provision for teens
2. Improved inclusive provision
3. Improved empathy and understanding of youth issues
4. Improved support systems in place to develop play

Where actions have not been delivered within the Plan they have been highlighted at the end of each section along with an approach on how the action will be delivered and in what time frame.

Actions marked with an () are hoped to be addressed in the revised Action Plan 2008-2011 detailed in this document*

Action 1: To promote the benefits of play to the community of North West Leicestershire helping to raise its profile

2005-2008 Actions	Priority	Projects delivered
Launch Play Strategy	Improved support systems in place to develop play	Play Strategy Launch Event 2005 Annual End of Year Progress Report Produced Submitted to the Big Lottery Fund
Establish Play Forum	Improved support systems in place to develop play	Partners identified and quarterly meetings set Play Partnership forms

2005-2008 Actions	Priority	Projects delivered
		part of a local children and young peoples forum Elected member appointed as 'youth champion' with a remit for play
Ongoing work with providers to promote play	Improved support systems in place to develop play	Weblet developed for play Play pages within annual summer booklet Annual Play Day events Positive publicity and news stories stored
Work to create a better understanding of youth engagement	Improved empathy and understanding of youth issues	Engagement Action Plan written and adopted by Council

Action 2: To manage the existing play provision and support any new play opportunities in the District

Yr 1 Action	Priority	Projects delivered
To deliver actions from 3 year Improvement Plan within Coalville Special Expenses	Improved provision for teens Improved inclusive provision	Coalville Park Phase 1,2 Whitwick Park Phase 1,2 Millfield Rd, Rec Ground Ashburton Rd Play Area Cropston Drive, Greenhill Hermitage Rec Grind Hermitage Road Play Area Melrose Rd, Thringstone Hensons Lane Thringstone
Carry out mapping and gapping exercise of play opportunities across all sectors in the District	Improved provision for teens Improved inclusive provision	Open Space Strategy Audits Revised Play Area Audit Ongoing PlaySafe Inspection Record Parish Council surveys
Work will all sectors in improving and updating their play provision	Improved support systems in place to develop play	Development of Play Partnership Involvement in East Midlands Play Forum Support and developments with Play England Joint working with CVS Increased capacity from Big Lottery £200,000 Work with voluntary sector play schemes

Yr 1 Action	Priority	Projects delivered
		Involvement of play within the Extended Services agenda

Action 3: To provide ongoing development and support for play throughout the District

Yr 1 Action	Priority	Projects delivered
Make use of 'best practice' in play	Improved support systems in place to develop play	Information obtained from Children's Play Council, Children Now, National Children's Bureau and networked to partners where appropriate Play England Regional Support Local and National networking and training events Benchmarking with other local authorities
Work with internal officers to address relevant play and youth issues/joint working	Improved support systems in place to develop play Improved empathy and understanding of youth issues	Internal officers group set up to look at CYP issues (CYP CAT) Involvement in the Play Partnership Election of Youth Champion
Continually seek funding opportunities for play development	Improved support systems in place to develop play Improved provision for teens Improved inclusive provision	Successful Big Lottery Fund £200,000 portfolio Initial approval for Playful Ideas bid through the CVS Funding secured from Section 106 monies for play development External funding also sought from a number of sources including: Children in Need £6000 Awards for All £5,000 Foundation for Sport and Arts £8,000
Work to empower local communities/schools in addressing inequalities of play provision	Improved support systems in place to develop play Improved provision for teens Improved inclusive provision	Extended Services involvement in Play Partnership to develop links Mapping and gapping exercises to look at priorities Play scheme grant administration CVS support for community and voluntary

Yr 1 Action	Priority	Projects delivered
		groups Support for Agar Nook Group through Big Lottery Funding
To review current leisure bus scheme for isolated special interest groups to access play provision	Improved provision for teens Improved inclusive provision	Bus scheme seized due to lack on need
Measure and evaluate all work surrounding play development	Improved support systems in place to develop play	Acknowledgement of National Play performance indicators Engagement scales and activity levels established Ongoing evaluation for Big Lottery funding for all projects Satisfaction surveys via household survey

Appendix 2

Coalville Specials Play Area and Open Space Audit 2008

Name	Location	Priority	Reason	Comments
Parsonwood Hill Recreation Ground	Whitwick	HIGH	Large grass area near school, well used. Well overlooked, good location for play	Pleasant area, good location - would be well used.
Whitwick Park North Street	Whitwick	HIGH	Excellent facilities and location, but more needed for 0-5 age range	Funding may be available via forthcoming 106 monies
Holly Hayes Rd Play Area	Whitwick	HIGH	Equipment OK, but whole area of playground could use some brightening up.	Ongoing maintenance needs to be addressed. Age range is for younger children.
Hilary Crescent Play Area	Whitwick	MEDIUM	Not a suitable area for play due to location, but could do with tidying up. Possible seating or environmental improvements	Not suitable for play development
Ravenstone Road Recreation Ground	Coalville	MEDIUM	The area could do with tidying/brightening up to the multi unit area and some of the surfacing is tired	
Hermitage Recreation Ground	Whitwick	MEDIUM	Existing equipment includes golf, swings and play area. Good location for other play elements i.e sand, water or adventure place	
Clover Place Play Area	Thringstone		Not for play but needs tidying up	Evidence of vandalism, secluded location & equipment heavily damaged.
Swan Way/Teal Close Play Area	Coalville		Good location for activities.	Central location. Possible play site in the future?
Ascot Drive Play Area	Coalville		Already a nice area	
Ashburton Rd Rec	Hugglescote		Suitable facilities already there. New equipment being installed. Well used area.	
Ashby Road	Coalville		Small grassed area	
Brambles Rd Play Area	Hugglescote		Small grassed area	
Briers Way Play Area	Whitwick		Already near Whitwick Park	
Buttercup Avenue Play Area	Donisthorpe		Existing equipment, well maintained and tidy	
Cademan St/Loughborough Rd	Whitwick		Small area of grass	
Castle Rock Drive Open Space	Coalville		Very small patches of grass	

Name	Location	Priority	Reason	Comments
City of Dan	Whitwick		Grass verge	Much of area does not belong to NWLDC
Claremont Drive Play Area	Coalville		Existing equipment	
Clutson Rd Play Area	Hugglescote		Existing equipment	
Coalville Park	Coalville		Already well used facility	
Cropston Drive Play Area (x2)	Greenhill		Existing equipment and new equipment for older children to be installed by Summer '08	
Dawkins Rd Play Area (next to Buttercup Avenue)	Donisthorpe		Same as Buttercup Ave. Nice, pleasant area	
Degens Way Play Area	Hugglescote		Small grassed area with BMX tracks/ramps	
Dennis Street Corner	Hugglescote			
Durris Close Play Area	Greenhill		Medium grassed area, quite close to houses	
Fairfield Corner	Hugglescote		Floral/garden area	
Forrester Close Play Area	Coleorton		Small area	
Gracedieu Woodland	Thringstone		Existing woodland/walks	Leave for "natural play"
Grange Farm Play Area	Hemington		Small area with existing equipment	
Hall Gardens Play Area	Ravenstone		Grassed area with trees	
Hall Lane/Perran Ave Open Space	Whitwick		Flat grass area with shrubs	
Hermitage Rd Play Area	Whitwick		Already lots of existing equipment/activities/facilities. Very well used	
Homestead Rd Rec Ground	Thringstone		Very gravelly. Stones & glass.	Well hidden, not good location for activity
Jackson St Play Area	Coalville		Small grassed area. Not suitable for development	
Kenmore Crescent Open Space	Greenhill		Quite large open grassed area	
London Rd/Broom Leys open Space	Coalville		Small, thin area of grass split by pathway	
Melrose Rd Rec Ground	Thringstone		Existing equipment with nearby woodland etc.	
Millfield Rec Ground	Hugglescote		New equipment	
Nature Alive	Coalville		Natural environment.	
Normandy Wood	Packington		Walks/Woodland	
North Ave Play Area	Hugglescote		Small piece of flat grassed area	
Orchard Close Play Area	Osgathorpe		Small grassed area with a seat.	
Owen Street Sports Ground	Coalville		Sports area, Football/Rugby pitches, Pavilion etc	No access to general public. Not suitable for play development
Oxford Street Play Area (x2)	Coalville		1) Small triangle grassed area 2) Small grassed area @ cul-de-sac off	

Name	Location	Priority	Reason	Comments
			Oxford St Not suitable for play development	
Priory Close Play Area	Thringstone		Small grassed area	
Quelch Close Play Area	Hugglescote		Small grassed area	
Romans Crescent Play Area	Greenhill		Small grassed area	
Scotlands Playing Fields	Coalville		Large field already well used	
Sharpley Ave Recreation Ground	Coalville		Existing equipment. Contentious area.	Ongoing maintenance required
Springfield Estate Play Area	Thringstone		Small grassed area leading to Gracedieu Woodland	
St. Clare's Court Open Space	Coalville		Small piece of grass – walk through. No play opps	
St. Faith's Drive Play Area	Coalville		Existing equipment for younger children. Well maintained	
St. John's Close Play Area	Hugglescote		Medium grassed areas with trees/shrubs	
Stinson Way Play Area	Whitwick		Small grassed area	
Stonerows/Stonepit Field	Moira		Woodland. Not easily accessibly. Lots of brambles etc	
Strathmore Close Play Area	Greenhill		Very small piece of grass. Not suitable for development.	
Sunningdale Road Play Area	Coalville		Existing equipment for younger children	
The Crescent Picnic Area and Play Area	Moira		Existing equipment, well used and well looked after	
The Elms Play Area	Whitwick		Very small grassed area with bench, bin & wooden rocker	
The Green	Donington-le-Heath		Small floral/garden area with a seat	
The Green	Thringstone		Small grass verge, flower bed area	
The Oval Play Area	Coalville		Existing equipment	
Thomas Road Play Area	Whitwick		Small grassed area	
Urban Forest Park	Coalville		Existing natural environment	
Wainwright Rd Play Area	Hugglescote		Medium sized grass area with shrubs	
Walker's Flats George Street	Whitwick		Open informal recreation area. Rear of allotments	
Willow Green Play Area	Coalville		Small grassed area divided by tarmac pathway.	Possible area for small equipment in the future.
Windmill Close Play Area	Kegworth		Flat grass area	

Appendix 3

Parish Council Consultation

In January 2008 all of the Parish Councils in the district were sent a letter and questionnaire asking for their views on play provision, both in their parish and also the district as a whole.

Out of 29 Parish Councils, 19 responded to the questionnaire (66%) Those who did not were:

Responses were received from:

Appleby Magna
Ashby Woulds
Belton
Breedon on the hill
Castle Donington
Charley
Chilcote
Heather
Ibstock
Kegworth
Lockington and Hemington
Long Whatton and Diseworth
Measham
Oakthorpe, Donisthorpe, Acresford
Packington
Ravenstone with Snibston
Snarestone
Swannington
Sweepstone

Responses were not received from:

Ashby Town Council
Bardon
Coleorton
Ellistown
Isley-cum-Langley
Normanton-le-Heath
Osgathorpe
Staunton Harold
Stretton en-le Field
Worthington.

QUESTIONNAIRE:

1. How would you rate the current condition of play equipment in your parish AND North West Leicestershire as a whole?
2. Which of the following play opportunities are currently available in your parish? Parishes were asked to tick if they have the facilities in the parish or if there is a need for the facility in the parish.
3. Please detail the current plans you have to develop play in your local parish, ie play area improvements plans, budgets allocated for play, play projects developed.
4. Please detail if these projects are in:
 - a) Early stages of development – established need only
 - b) Developing stages – an identified need has turned into project idea.
 - c) Action happening (may still require expertise of further funding) – work is underway.
5. Please detail any further comments you have regarding play in your parish or in North West Leicestershire.

RESPONSES:

Current condition of play equipment in the parish and the district:

Condition	Parish	District
Excellent	2	0
Very Good	3	1
Good	6	9
Fair	3	1
Poor	0	0
Very Poor	1	0
Under construction	0	0
Other	0	2

Comments via Parish

Parish	Current condition of play in parish & district	What is currently available in parish?	What is needed in the parish?	Current plans in parish for play development ?	What stage are projects in?	Any further comments?
Appleby Magna	Parish:Good District:Good	Open space Holiday Play Scheme Youth Shelter Basketball Area	None Stated	None Stated	ALL WEATHER CRICKET PITCH = identified need has turned into project idea. REPLACEMENT PAVILION = Action	None

Parish	Current condition of play in parish & district	What is currently available in parish?	What is needed in the parish?	Current plans in parish for play development ?	What stage are projects in?	Any further comments?
					happening, work is underway	
Ashby Wolds Town Council*	Parish:Good District:Fair	Open space Fixed Playgrounds Holiday Playscheme Youth Club Woodland areas for play	Skate provision	Redevelopment for Spring Cottage Rec Ground. Funds allocated for Albert Village Community Centre	Not Stated	Play area at Sarah's Wood is good, but poorly maintained. Moira Furnace/The Old Crescent – automatic lighting at dusk would be beneficial. Albert Village Rec Ground – broken bottles & dog fouling. This is maintained by AWTC grounds contractor and has seen an increase in litter and dog fouling in recent months.
Belton *	Parish:Very Poor District:Don't know	Fixed play ground in poor condition from damage. Open Space Skateboard provision	Improved fixed playgrounds Holiday Play schemes Inclusive play opps Indoor sports Youth Club Youth Shelter Woodland areas for play.	At the present time, Belton is setting aside £2k per year towards the playground fund, this is a long term project.	Not stated	We need as much help as possible, although Belton is a small parish there are lots of children who wish to use a playground. We have a community action group who are currently fundraising to try and get some money.
Breedon on the Hill*	Parish:Good District:Good	Fixed playgrounds Open space attached to school Holiday playschemes	Skateboard provision Indoor Sports Youth Club Youth Shelter Woodland	None stated	None stated	The open field is attached to the school, currently in dispute with LEA/LCC as usage by the community/

Parish	Current condition of play in parish & district	What is currently available in parish?	What is needed in the parish?	Current plans in parish for play development ?	What stage are projects in?	Any further comments?
			areas.			parish. There is a need generally to engage 10yrs + and young adults in activities which will keep them off the streets and occupied.
Castle Donington*	Parish:Excellent District:Good	Open Space Skateboard provision Fixed playgrounds Holiday Play scheme Inclusive Play Youth Shelter	Indoor Sports Youth Club Woodland areas for play	Currently in a rebuild programme of sports pavilion Ongoing plans for a possible basketball area & all weather training area. Wish list: To provide roof over current swimming pool at Community College.	1. Sports pavilion currently being built, funding provided by outside donations. 2. Basketball area & all weather area still needs funding & are in the development stages	Castle Donington's parish's growing size requires a community centre that will encompass a sports hall, fitness training, swimming & community involvement.
Charley	Didn't answer	Not suitable as very rural	Not suitable as very rural	Not Stated	Not Stated	None
Chilcote*	Parish:Good District:Good	Open Space Fixed Playground	Youth Shelter	None planned other than maintenance of current facilities	None Stated	Excellent facilities are provided by the National Forest.
Heather*	Parish:Good District:Not stated	Open spaces Fixed Playgrounds Youth Shelter MUGA	Not stated	Follow up to parish plan looking at play provision. Parish worked with a group of young people and youth workers and won a grant worth £54,000 for youth shelter and MUGA. Completed March 2008.	We have 2 sites where expertise may be required at a later stage. Some work required on Mill Lane Rec in respect of safety surfaces following annual safety inspection.	None
Ilstock*	Parish:Good District: Not stated	Open space Skateboard provision	Holiday playschemes	Leicester Rd/Miner's Welfare	Early stages	None

Parish	Current condition of play in parish & district	What is currently available in parish?	What is needed in the parish?	Current plans in parish for play development ?	What stage are projects in?	Any further comments?
		Fixed playgrounds Indoor sports Youth Club Woodland areas	Inclusive play Youth Shelter	Play Area under review		
Kegworth*	Parish:Excellent District:Good	Open Space Fixed playgrounds Indoor sports Youth Club Woodland areas Kegworth Imps	Football pitches	Currently the playing fields sub-committee of the parish council is developing plans for the improvement of existing play areas, Sideley and Whatton rec areas, to be more useful to older children, since the facility for under 12's is already very good i.e. outdoor tennis tables, hard-court, 5 a side, landscaped/seating areas for adults.	Due to be raised for public consultation	The village cricket and tennis club also have junior interests/recruitment schemes and policies.
Lockington-cum-Hemington	Parish:Very Good District:Not stated	Open Space Fixed Playgrounds	Not stated	Not stated	Not Stated	None
Long Whatton & Diseworth*	Parish:Good District:Not stated	Open space Fixed playgrounds Holiday playschemes Indoor sports	Skateboard provision Inclusive play Youth Club Woodland areas to play	Youth shelter from BLF Mobile Skate to come to Long Whatton 3 rd fixed playground planned for West End, Long Whatton (Development site)		Limited parish provision for sport/sports hall, esp for teenagers. Castle Donington is accessible, any other requires transport arrangements.
Measham*	Parish:Fair District:Good	Open Space Fixed Playgrounds Holiday playschemes Inclusive play Indoor sports	Youth Shelter Woodland area for play	Games area at Riverway in conjunction with NWLDC & BLF £35k We are expecting	Riverway – action happening. New Street play area is still in very early stages until	We have 6 play areas in Measham all maintained by the Parish Council. Two of these areas

Parish	Current condition of play in parish & district	What is currently available in parish?	What is needed in the parish?	Current plans in parish for play development ?	What stage are projects in?	Any further comments?
		Youth club		approx £36k in Section 106 monies in due course but this will be ring fenced to New Street play area. We hope to use this money to upgrade some equipment & surfacing.	funding is in place plans will not be drawn up.	will require upgrading in the near future as some items are approaching the end of their life.
Oakthorpe & Donisthorpe*	Parish:Good District:Fair	Open space Fixed playgrounds Holiday playschemes Inclusive play Indoor sports	Skateboard provision More fixed playgrounds Youth Club Youth Shelter	Parish Plan not completed	Not Stated	None
Packington						
Ravenstone with Snibston	Parish:Very good District:Good	Open space Fixed playgrounds Holiday Playschemes Youth Shelter & MUGA Woodland	None Stated	None stated	Not Stated	None
Snarestone*	Parish:Very good District:Very good	Open Space Fixed playgrounds Woodland areas for play	Holiday Play schemes	Nothing at present for pure play, but we are planning to install water & electricity in the football pavilion – this will then be used as a community centre with some play facilities.	Developing stages for football pavilion	As the children grow up we will have to review their changing requirements.
Swannington*	Parish:None District:Good	Open Space Youth Club	Holiday Play schemes	None stated	None Stated	None
Sweepstone*	Parish:Good District:Good	Open Space Fixed playgrounds Woodland areas	Not stated	Refurb of Sweepstone Play area. Grants required or District	Funding required for refurbishment	None

Parish	Current condition of play in parish & district	What is currently available in parish?	What is needed in the parish?	Current plans in parish for play development ?	What stage are projects in?	Any further comments?
				contribution		

Parishes with a * next to them have expressed a need for play facilities or help/guidance for future developments and plans.

Most of the Parish Council's who responded have stated that there is a need for additional play opportunities in their parish and several have plans in place, but funding appears to be a barrier.

Appendix 4

Play Partnership Consultation

In February 2008 an event was held with all partners within the Play Partnership and other key stakeholders to look into the impact and development of local play opportunities for North West Leicestershire.

As part of this process the priorities and needs of children, young people and families were reviewed in the light of the impending revision of the Play Strategy 2008-2011

The outcome of the event now informs the action plan this strategy focuses on. A summary of the event is detailed below

Priorities – Group one

1. To promote the value of play
2. To sustain and develop local play opportunities
3. To develop creative play spaces
4. To maintain a strong play development infrastructure

Action

1. - To champion and support play with Parish Councils and other organisations
- To ensure Play features in Children's Centres and extended services
- To improve the promotion, communication and marketing of play
2. - To develop a multi-agency co-ordination of holiday play provision with a focus on rural areas
- To support voluntary sector play opportunities
3. - To influence play area developments ensure the active involvement of children and young people
- To promote, support and encourage the development of youth clubs
- To champion adventure play, risky play and cycle tracks
4. - To ensure a regular programme of Play Worker training available
- To promote volunteering in Play
- To maintain an active, cross cutting play partnership

Priorities – Group two

- Summer activities – working together
- Rural issues – better cycle paths/access
- Sustainable play – people and finance
- Giving CYP skills for them to learn and do without workers
- Skills for parents to play with children
- Buddying scheme with SEN children

Underpinning Principles

- Equality of access ie inclusivity
- Free or low cost provision
- Supervision where possible

Also need to - sustain Mobile SK8 park
- sustain Play Assistant

Appendix 5

Young People Consultation

Date: July/August 2007:

Location: Greenhill

Event: Play Day 2007

On behalf of North West Leicestershire Council for Voluntary Service, in partnership with the District Play Forum, the Play Team is trying to find out the needs of young people in North West Leicestershire with regards to play facilities.

Twenty three people responded to the questionnaire.

The questions and responses are as follows:

Where do you live?

Greenhill	Agar Nook	Other
20	2	1 (Ashby)

What age are you?

Under 5	5-8	9-12	13-19	20+
0	5	14	2	2

Do you use local play areas?

Yes	No
20	3

What would make you use them more?

COMMENTS:

Football nets and climbing activities

Something for all ages

If the older children didn't hang around

A grown up to keep us safe

Some undercover equipment when it is raining or hot

More swings and climbing frames, slides

Regular cleaning to remove glass etc

Better park area

More bins and more equipment

More things for 9-12 year olds

More activities e.g. football

Penalty shoot out area

Do you play elsewhere?

Yes	No
16	7

If yes; where?

Agar Nook	Ibstock	Own Garden	Whitwick Park	Sarah's Wood	Swimming	HLC	Bradgate Park	Coalville Park
3	1	8	2	1	2	2	2	2

Is there anything that you think might improve play in your area?

COMMENTS:

Basketball net

More variety of activities

More things for older children

Supervised play sessions

Tree climbing and adults on site

More equipment. Rangers/Sports workers

Play leaders/youth workers

Organised activities and a secure area for the children

Dens to hide in

Football courts

Underground cave!

More dens and roundabouts

More trees

Archery!

More flowers

A prettier area.

Appendix 6

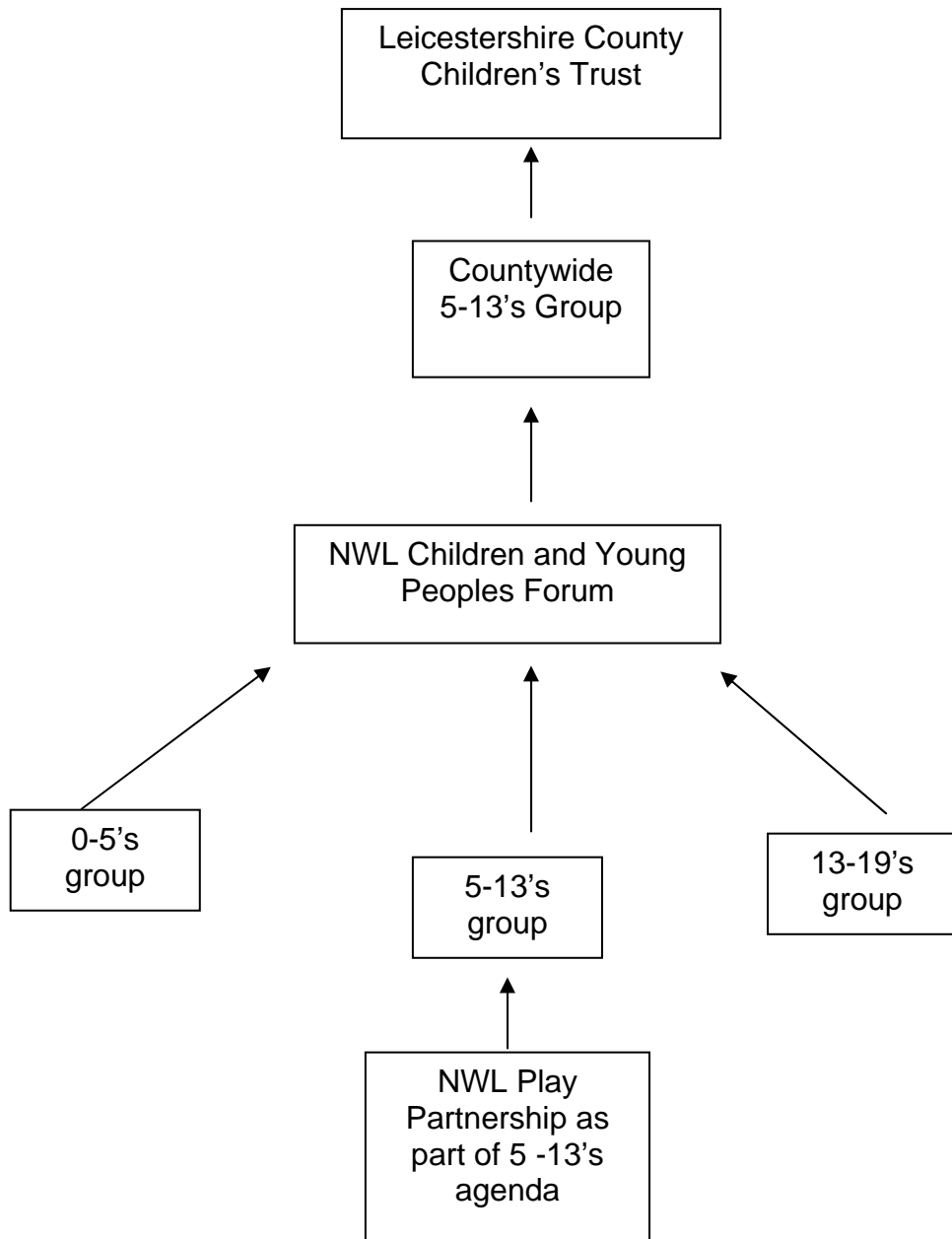
PPG17 Open Spaces Report

The District Council are in the process of producing a PPG17 Open Spaces Report which aims to set the future policies and procedures relating to open space provision in North West Leicestershire.

The full document is available from www.nwleics.gov.uk under Development Planning Section

Appendix 7

Governance structure





***For further information please contact
Children's Services Co-ordinator
Leisure and Culture
North West Leicestershire District Council
Council Offices
Coalville
Leicestershire
LE67 3FJ
Telephone: 01530 454642
www.nwleics.gov.uk/play***