



Business advice and support  
from North West Leicestershire  
District Council



# Health and safe

## Free advice for SMEs

North West Leicestershire District Council's Environmental Health team is now offering free health and safety advice and guidance for small to medium sized businesses and the self-employed.

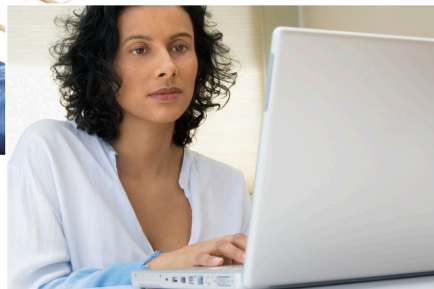
Our business advisory service has been set up to help local businesses meet their statutory obligations.

Good health and safety in the workplace is good business sense.

## Your duties under the Health and Safety at Work Act (1974)

As an employer or contractor you have a responsibility for the health, safety and welfare of your employees. Responsibility also extends to visitors, customers, suppliers, the general public and anyone else who would be affected by your work activities.

Health and Safety laws apply to all businesses, whatever the trade or industry and however how large or small, this also includes the self-employed, contractors and employees.



# ty advice and support

## Getting it right

We are very aware of how confusing health and safety legislation can be, and how time consuming and costly it can be to manage.

We can offer free advice, guidance and support to assist you in understanding, implementing and managing good health and safety in your workplace. We can't, however, offer a consultancy service or write your documentation for you.

The service you receive from us will be tailored to your needs, is free of charge and will help you reduce the costs associated with good health and safety management.

We can help you with:

- identifying workplace hazards
- risk assessments
- understanding and applying legislation and regulations
- bench-marking and best practice techniques

We can answer individual question and queries over the phone, by email or visit you in your workplace to better understand your business and its needs. Whether you are a warehouse, retail outlet or hair and nail studio, we can help you.

**Should you wish to take up this new service, or find out more, please contact:**

**Environmental Health**

**Tel: 01530 454545**

**Email [ehealth@nwleicestershire.gov.uk](mailto:ehealth@nwleicestershire.gov.uk)**



## **Business engagement – better communications**

North West Leicestershire District Council is committed to improving its services and communications with all businesses in the district.

We would welcome your feedback on the services we offer at present and what services you would like to receive from us in the future.

To tell us your thoughts and suggestions, please contact:

**Environmental Health**

**Enquiries: 01530 454556**

**Email: [health@nwleicestershire.gov.uk](mailto:health@nwleicestershire.gov.uk)**

## **Information and advice at your fingertips**

We are also updating the Council website to include more businesses information and advice.

We aim to include information on a number of topics, including:

trading 'green' and reducing your carbon footprint

emergency planning and business continuity

news of local events to support businesses

key information on business rates, commercial waste and health and safety

**Visit: [http://www.nwleics.gov.uk/pages/for\\_your\\_business](http://www.nwleics.gov.uk/pages/for_your_business)**

### **COUNCIL'S VISION**

North West Leicestershire will be a place where people and businesses feel they belong and are proud to call home

North West Leicestershire District Council,  
Council Offices, Whitwick Road, Coalville,  
Leicestershire, LE67 3FJ.

This document is available in other formats on request