

Presentation to North West Leicestershire Parish Liaison Group

16 March 2016

Presentation by the Phase 2 Team

An update since we last met

- Consultation update
- Re- Balancing Britain report – Oct 2014
- Secretary of State Announcement – November 2015
- Station and connectivity
- Next steps
- Education and skills
- Supply chain opportunities

Consultation Process

- **January 2013:** route announcement
 - letters sent to those directly affected
- **July 2013:** consultation launched
 - 37 Information Events
 - Events in Measham and Ashby de la Zouch
 - Over 500 people attended
- **January 2014:** consultation closed
 - 10,000+ responses received
 - A range of different views expressed

Key themes – Measham and Ashby de la Zouch information events

- **Property and compensation** – EHS.
- **Local businesses and housing development** – understanding impacts.
- **Traffic** - in discussion with Highways England, detailed design at a later stage.
- **Noise** – baseline surveys and consider mitigation at next stage
- **Environmental impacts eg local mines** – desktop studies to better understand risks and possible mitigation.
- **Construction impacts** – ongoing engagement.

Summary recommendations



The strategic proposal for Phase Two is right



The East Midlands and South Yorkshire stations are best for the regions and the existing network



A Crewe hub will serve the local region and the North West



How can we build more quickly, and for less?



Leeds station must match the city's vision and its transport needs



Substantial improvements to East-West services are possible



On the roads, we have a choice: take action or face gridlock

Autumn 2015 Announcement

- Acceleration of route from Fradley to Crewe (2A)
- Toton is the preferred location for the East Midlands Hub station – no other options are being considered
- Growth funding has been provided for East Midlands Local Authorities to enable them to develop plans for maximising the opportunities HS2 will bring
- Decision on the full Phase 2 route in autumn 2016

Station serving the East Midlands

- Network Rail are working with local stakeholders and HS2 Ltd on options to optimise rail connectivity to the region and beyond.
- Leicestershire CC together with other East Midlands Authorities have begun considering bus, tram and road access.
- East Midlands Growth Strategy – developing a strategic vision for the area

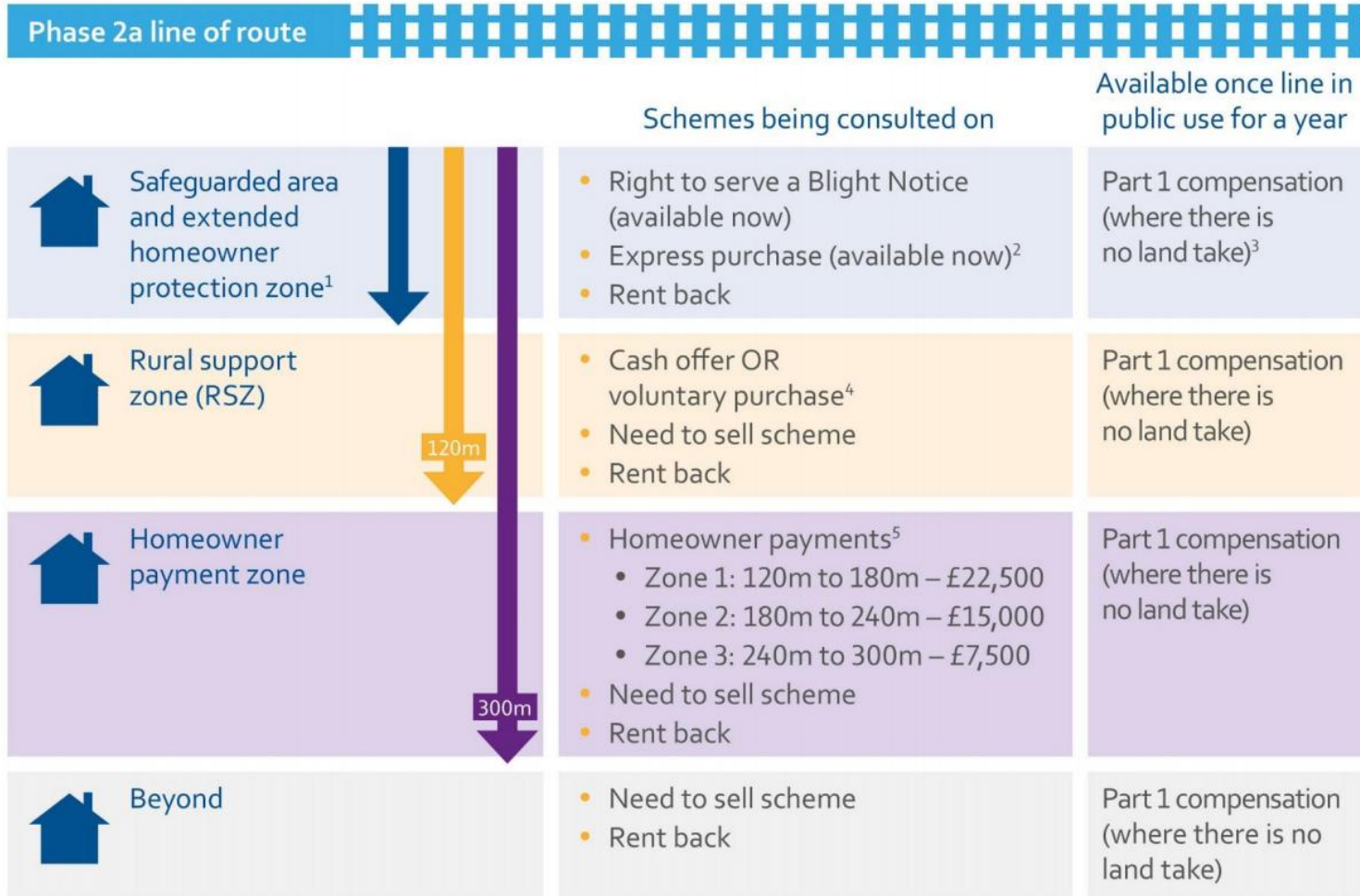
Next Steps

- Spring 2016 – Northern Powerhouse Rail and Scotland
- Autumn 2016 – Announcement on Phase 2B route
- 2017 – Hybrid Bill Deposited for Phase 2A
- Mid 2020's – Phase 2B construction begins
- 2026 – Phase 1 opens
- 2027 – Phase 2A opens
- 2033 – Phase 2B opens

Exceptional Hardship Scheme

- In addition to future statutory compensation, Government has introduced the EHS to assist affected property owners
- Discretionary scheme for those with an “urgent need to sell, but have been unable to do so – other than at a substantially reduced price – as a direct result of the announcement of the Phase Two route of High Speed Two”
- Majority independent panel makes recommendations to DfT, decisions are then taken on behalf of Secretary of State
- Currently expected to be replaced by longer term discretionary schemes at the end of 2016

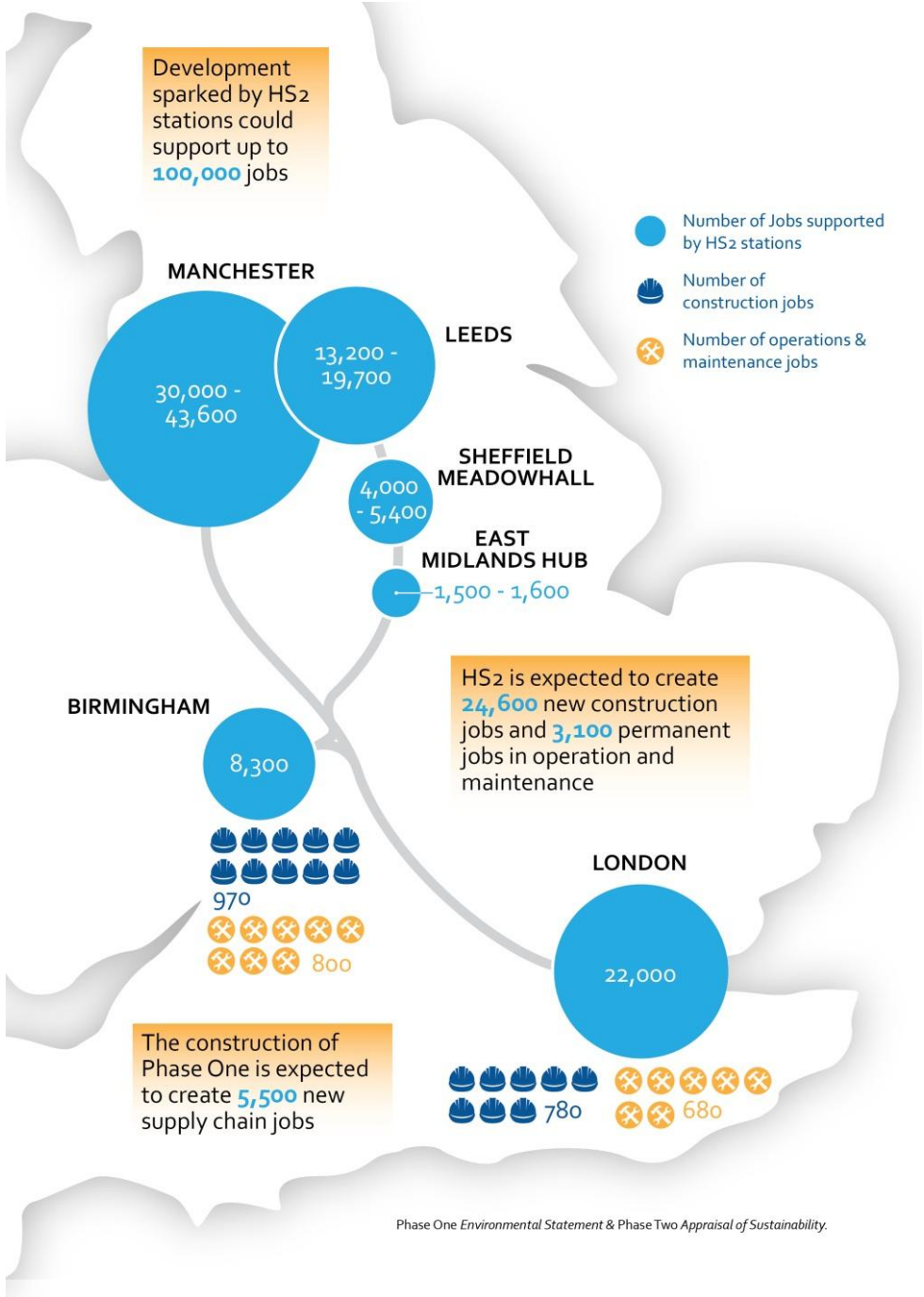
Property schemes – Phase 2A consultation



¹ Usually 60m in rural areas. ² Surface safeguarding only. ³ Compensation for any reduction in the value of property as a result of the physical effects of the operation of the railway ⁴ Applies to rural areas only and does not extend to areas beyond deep tunnels. ⁵ Only available after Royal Assent to the Bill. Applies to rural areas only and does not extend to areas beyond deep tunnels.

Skills and Supply Chain

Jobs by region

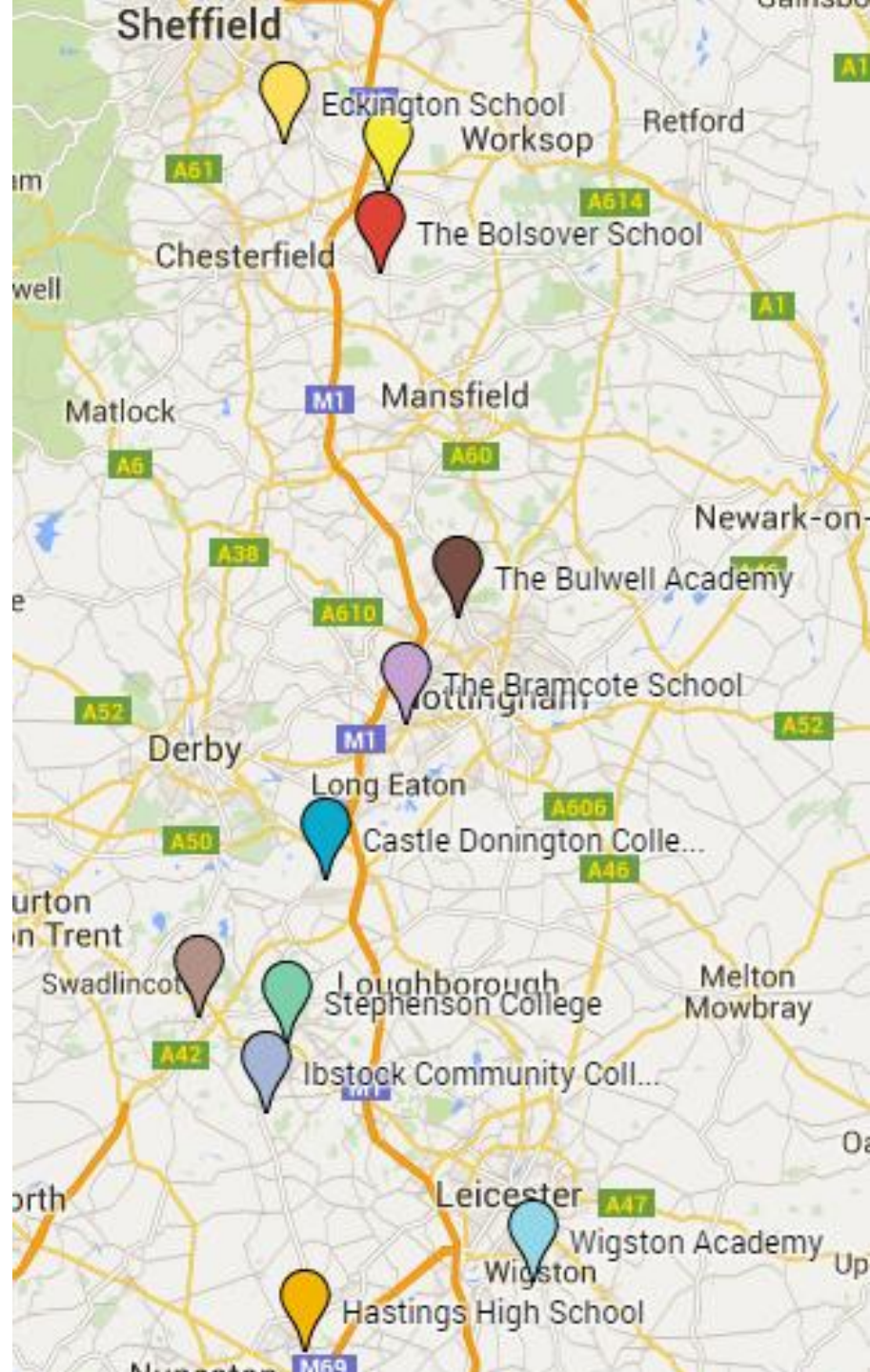


The HS2 Education Programme



School and college engagement in the East Midlands

- Castle Donington College
- Eckington School
- Hastings High School
- Heritage High School
- Ibstock Community College
- Ivanhoe College
- Stephenson College
- The Bolsover School
- The Bramcote School
- The Bulwell Academy
- Wigston Academy



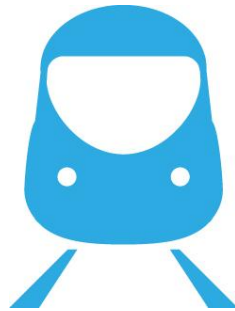
The National College for High Speed Rail



Opening in September 2017 in
Birmingham & Doncaster



Attracting new entrants to the
industry

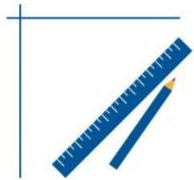


Training and developing industry
employees



Qualifications offered at Levels 4
and 5 from age 19

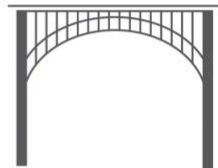
What we will be buying



DESIGN &
SERVICES



TUNNELS



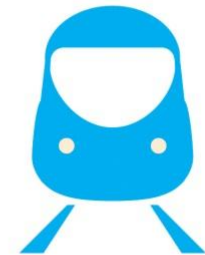
SURFACE
ROUTE



STATIONS



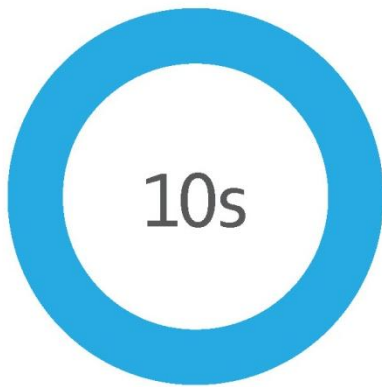
RAILWAY
SYSTEMS



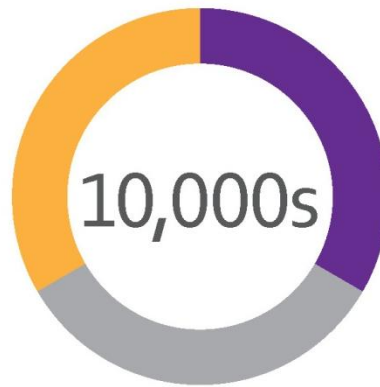
ROLLING
STOCK

Who we will be buying from

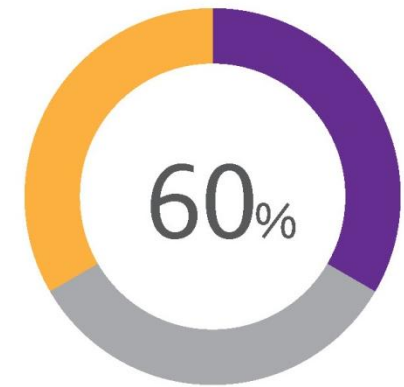
HS2 direct opportunities



HS2 indirect opportunities



We expect 60% of contract opportunities...



...to be awarded to SMEs

How you can engage with HS2



Register

scc@hs2.org.uk



Questions

scc@hs2.org.uk



Resources

www.gov.uk/hs2

Rachael.Blake@hs2.org.uk
Freda.Jesudason@hs2.org.uk

or

Public Enquiries Team: 0207 944 4908